



DONAHUE
ASSOCIATES

COMMERCIAL REAL ESTATE ADVISORS

802-862-6880

FOR LEASE

68 Randall Street

South Burlington VT 05403

Mansfield View—Class A Offices Available



Lease Opportunity Overview

- **MANSFIELD VIEW** provides a potential tenant seeking a relocation an opportunity to locate in one of 68 Randal Streets newly constructed office suites in what is a state of the art Class A office building with stunning views of Mount Mansfield and the Green Mountains. **68 Randall Street** was designed by Truex Cullins Architects and constructed by award winning builder BlackRock Construction in what is Chittenden County's newest premier office location.
- **Office Suites Available**—7,000 SF - 12,000 SF
Each suite has a blend of offices, conference rooms, open flex space complimented by natural lights, mountain views, and
- **Lease Price**— \$26 per square foot plus utilities

CONTACT US



DONAHUE
ASSOCIATES
COMMERCIAL REAL ESTATE ADVISORS



Steve Donahue

Steve@donahueassociatesvt.com

(802) 862-6880

www.donahuessociatesvt.com



Photos



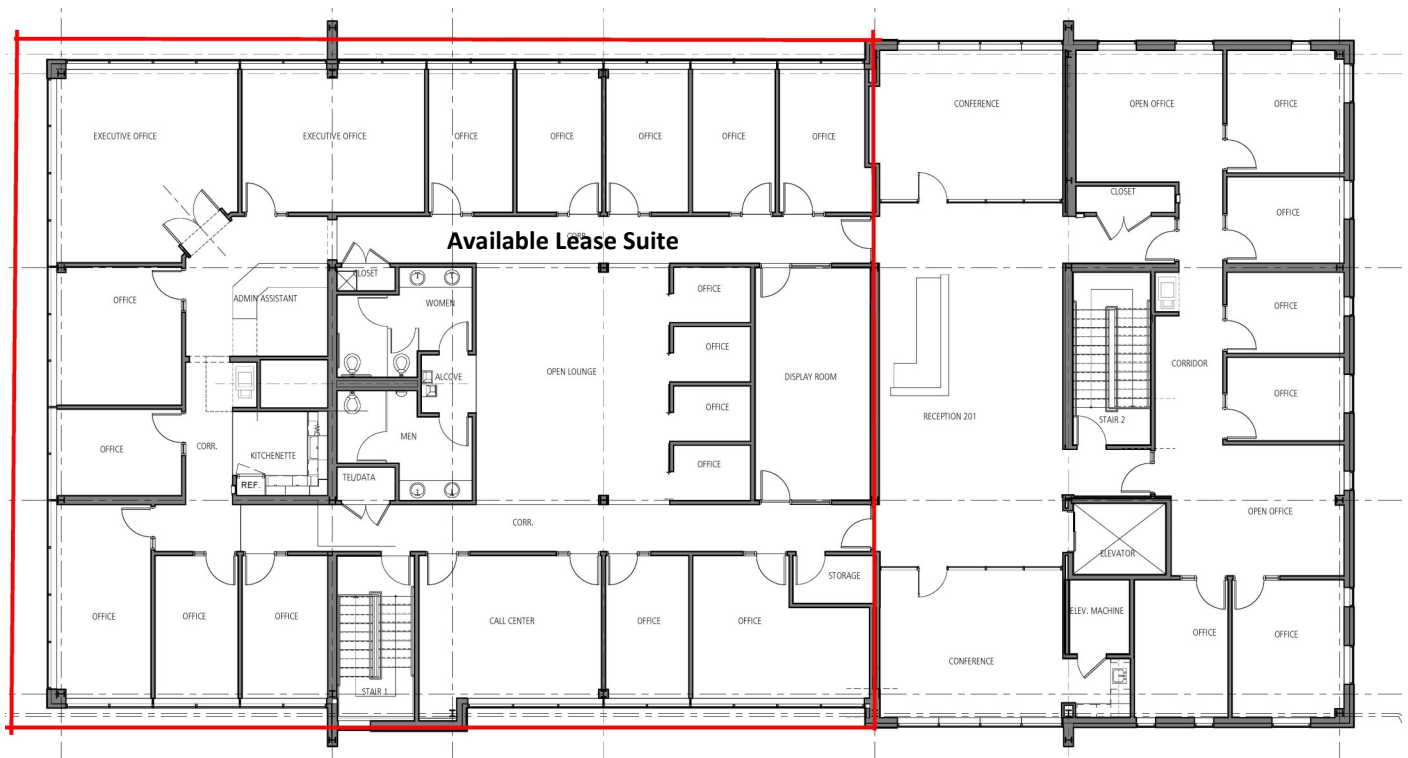


**DONAHUE
ASSOCIATES**
COMMERCIAL REAL ESTATE ADVISORS

802-862-6880



Second Floor Plan



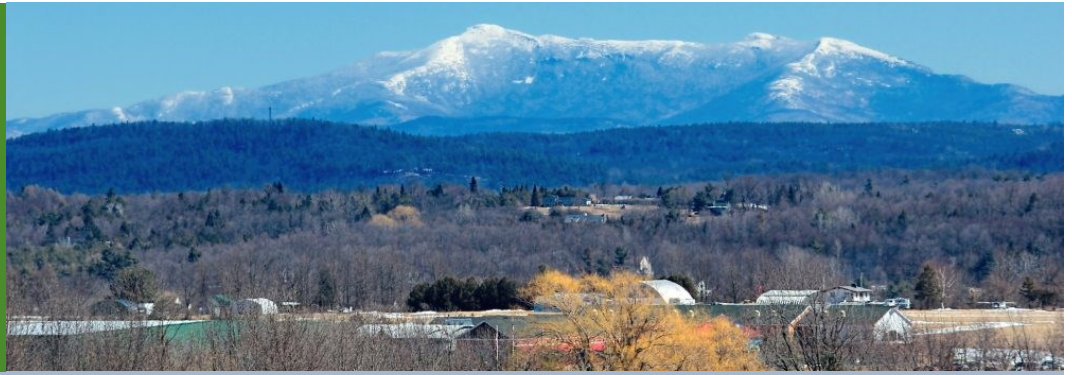
This second floor lease suite offers the potential to have up to 7,000 SF with a mix of up to 15 offices, small private call booths, kitchenette, conference, open flex space and tall enjoyed by bright lit space with stunning views of the Green Mountains. If more space needed there is an opportunity to lease the entire 2nd floor and combine with the neighboring 2,500 square foot lease suite.



**DONAHUE
ASSOCIATES**

COMMERCIAL REAL ESTATE ADVISORS

802-862-6880



Site Property and Location

