



**DONAHUE
ASSOCIATES**
COMMERCIAL REAL ESTATE ADVISORS

802-862-6880

www.donahueassociatesvt.com

Description

Here is your opportunity to lease an entire top floor of a gorgeous office building with panoramic views of the Adirondaks and Lake Champlain!

Atop Colchester's Water Tower Hill, this fourth floor office has meeting and conference spaces, a large kitchen/break room, private offices, easy access to I89, proximity to Burlington Int'l airport, walking trails and plentiful parking.

Lease as is, or utilize our in-house construction team to customize this space to your exact specifications!



CONTACT US

Donahue & Associates

(802) 862-6880

www.donahueassociatesvt.com



Steve Donahue

Steve@donahueassociatesvt.com

**FOR LEASE/
OFFICE SPACE**

**356 Mountain View Drive,
Colchester, Vermont**

Mountain Lake
Plastic Surgery

USCGC Burlington
Field Office

356 Mountain View Dr,
Colchester, VT 05446

Lease the entire top floor!



SUMMARY

Office Suite: Entire 4th Floor Class A office suite at Water Tower Hill.

Size : 13,000 +- SF

Lease Price: \$14.00/SF, NNN (\$8.36/SF includes natural gas)

Available: 45-60 days from lease execution.

Zoning: COM—Office Building. Approved uses include, but are not limited to, general office, research/lab facility, medical office, personal or business services.

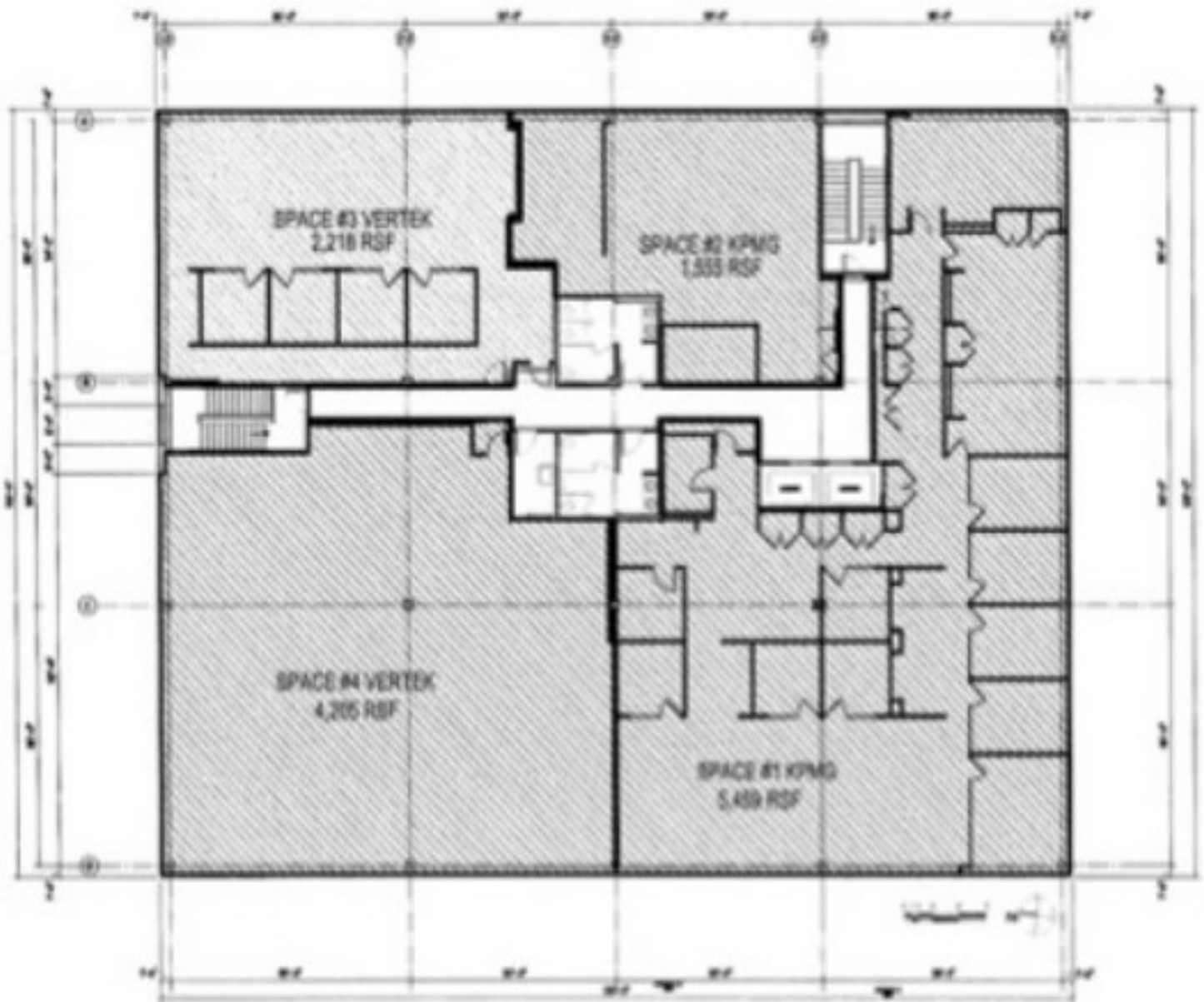


**DONAHUE
ASSOCIATES**
COMMERCIAL REAL ESTATE ADVISORS

FOR LEASE/ OFFICE SPACE

356 Mountain View Drive, Colchester, VT 05408

4th FLOOR LAYOUT





DONAHUE ASSOCIATES
COMMERCIAL REAL ESTATE ADVISORS

FOR LEASE/ OFFICE SPACE

356 Mountain View Drive, Colchester, VT 05408

MAP



The data contained herein is for informational purposes only and is not represented to be error free. We have made every effort to obtain information regarding listings from sources deemed reliable. However, we cannot warrant the complete accuracy thereof subject to errors, omissions, change of price, rental or other conditions, prior sale, lease or financing, or withdrawal without notice. Notwithstanding, any attachments of scanned and signed documents to the contrary, nothing contained herein constitutes nor is intended to constitute an offer, inducement, promise, or contract of any kind. Only signed documents are adequate to enter into a contract, or to modify, amend, change or provide any required notice to a previously signed contract.



**DONAHUE
ASSOCIATES**
COMMERCIAL REAL ESTATE ADVISORS

**FOR LEASE/
OFFICE SPACE**

**356 Mountain View Drive,
Colchester, Vermont**

Mountain Lake
Plastic Surgery

USCGC Burlington
Field Office

356 Mountain View Dr,
Colchester, VT 05446

802-862-6880

www.donahueassociatesvt.com

