



DESCRIPTION

This gorgeous, light filled, small office suite at the pinnacle of Water Tower Hill is ready to be customized to your specific needs!

With in-house construction and on-site property management, you can rest assured that your office specifications will be professionally executed. Allow a short 45-60 days from lease execution for completion of your custom office!

Close proximity to BTV International Airport and easy access immediately off Exit 16, I-89.

SUMMARY

OFFICE SUITE: Beautiful 2nd Floor Class A office suite at Water Tower Hill.

SIZE : 1,000 +/- RSF

LEASE PRICE: Market Price/SF, NNN

AVAILABLE: 45-60 days from lease execution

ZONING: COM—Office Building. Approved uses include, but are not limited to, general office, research/lab facility, medical office, personal or business services.

PARKING: Ample on-site



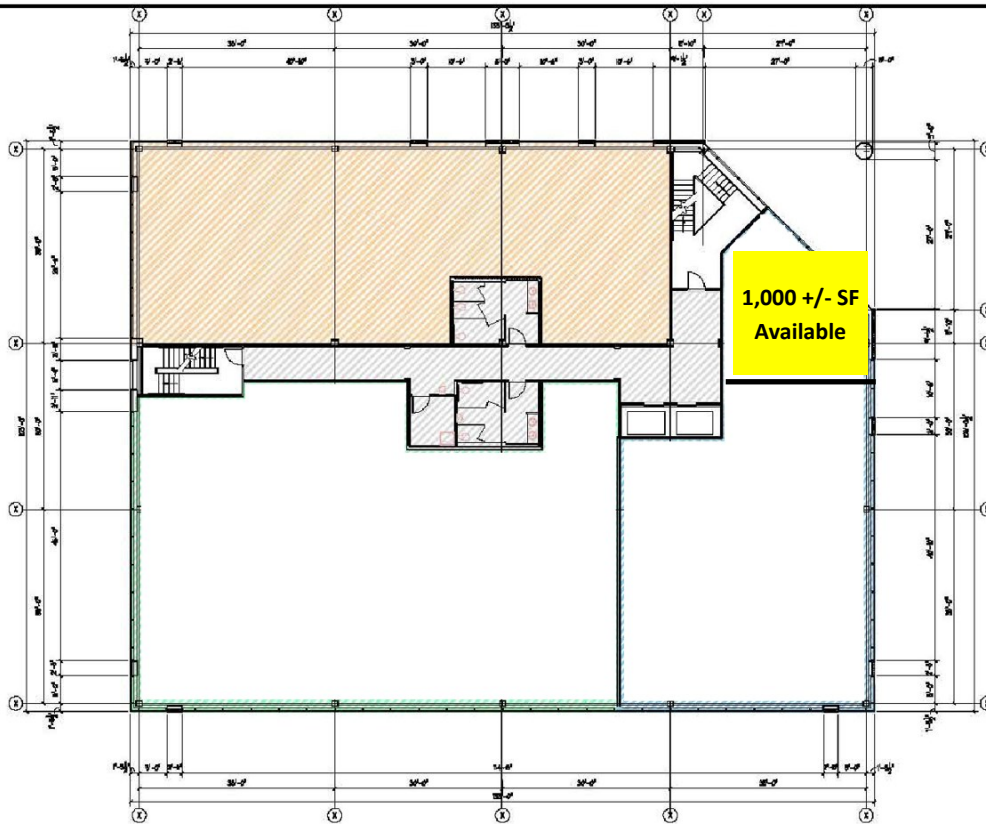


**DONAHUE
ASSOCIATES**
COMMERCIAL REAL ESTATE ADVISORS

FOR LEASE/ OFFICE SPACE

356 MOUNTAIN VIEW DRIVE, COLCHESTER, VT 05408

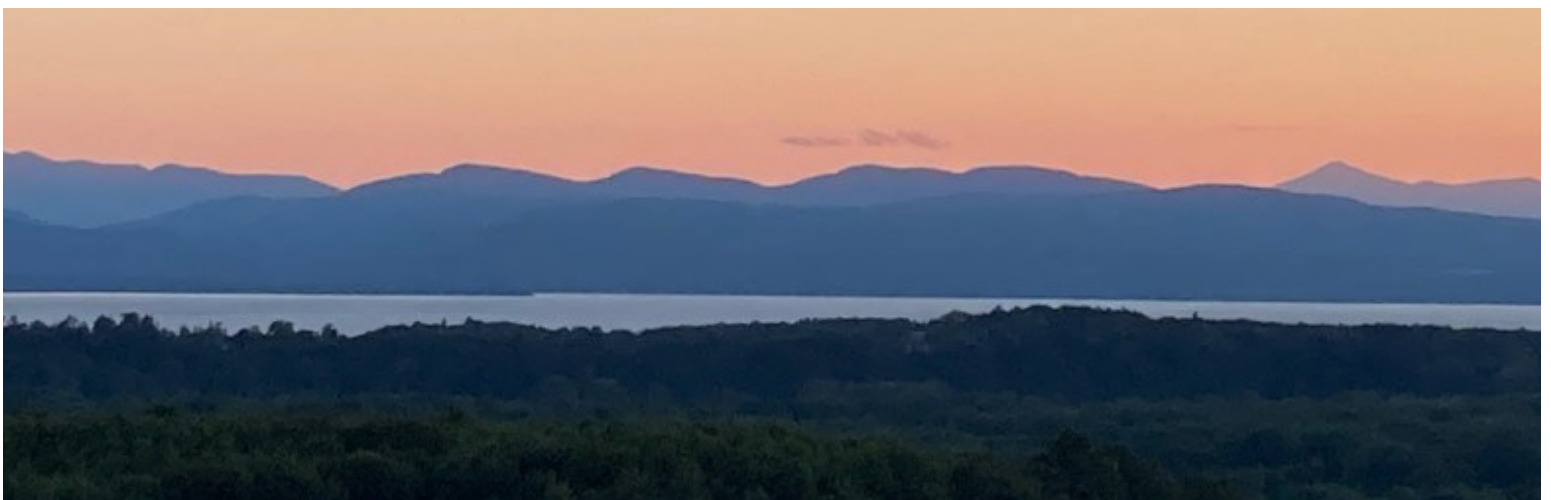
FLOOR PLAN



WATER TOWER HILL
LEASABLE AREA PLANS
COLCHESTER, VERMONT
26 JUNE 2006 REF: 40634

**356 MOUNTAIN VIEW DRIVE
LEVEL 2**

FREEMAN FRENCH FREEMAN, INC.
81 MAPLE ST., BURLINGTON, VERMONT 05401
P: (802) 864-6844
F: (802) 860-1815
www.f3finc.com





**DONAHUE
ASSOCIATES**
COMMERCIAL REAL ESTATE ADVISORS

FOR LEASE/ OFFICE SPACE

356 MOUNTAIN VIEW DRIVE, COLCHESTER, VT 05408

MAP



The data contained herein is for informational purposes only and is not represented to be error free. We have made every effort to obtain information regarding listings from sources deemed reliable. However, we cannot warrant the complete accuracy thereof subject to errors, omissions, change of price, rental or other conditions, prior sale, lease or financing, or withdrawal without notice. Notwithstanding, any attachments of scanned and signed documents to the contrary, nothing contained herein constitutes nor is intended to constitute an offer, inducement, promise, or contract of any kind. Only signed documents are adequate to enter into a contract, or to modify, amend, change or provide any required notice to a previously signed contract.