



DONAHUE
ASSOCIATES
COMMERCIAL REAL ESTATE ADVISORS

FOR LEASE/
RESTAURANT SPACE

3 Maple Street,
Essex Jct, VT

Brand New Construction at Five Corners in Essex offers 1,400 +/- SF Restaurant/Retail Space for Lease!



Overview:

BlackRock's development "Chittenden Crossing" in Essex Junction aims to become the hub of activity in the area with a focus on supplying affordable residential housing units to the average working single person.

The space for lease is a part of the first floor at 3 Maple Street and has been constructed with a restaurant in mind. With 22 planned tables, this space will become an attractive destination for the residents in the new buildings and locals alike. If desired,

Lease Price:

\$19/SF NNN, (CAM \$2.50/SF) plus utilities
+ % tax, % insurance

Parking::

15 parking spots available outside the building with more available in close proximity.

Zoning:

VC—Village Center. Approved uses are, but not limited to,

CONTACT US

Donahue & Associates

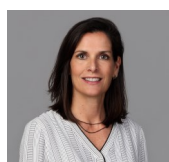
(802) 862-6880

www.DonahueAssociatesVT.com



Steve Donahue

Steve@DonahueAssociatesVT.com



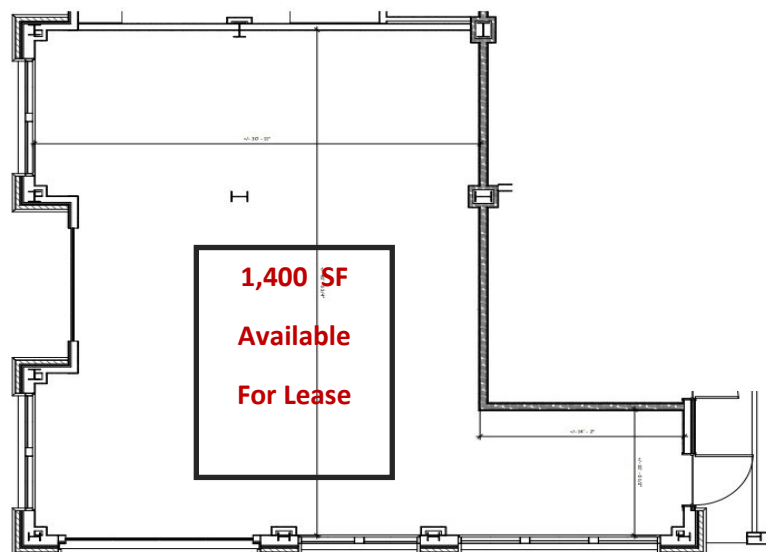
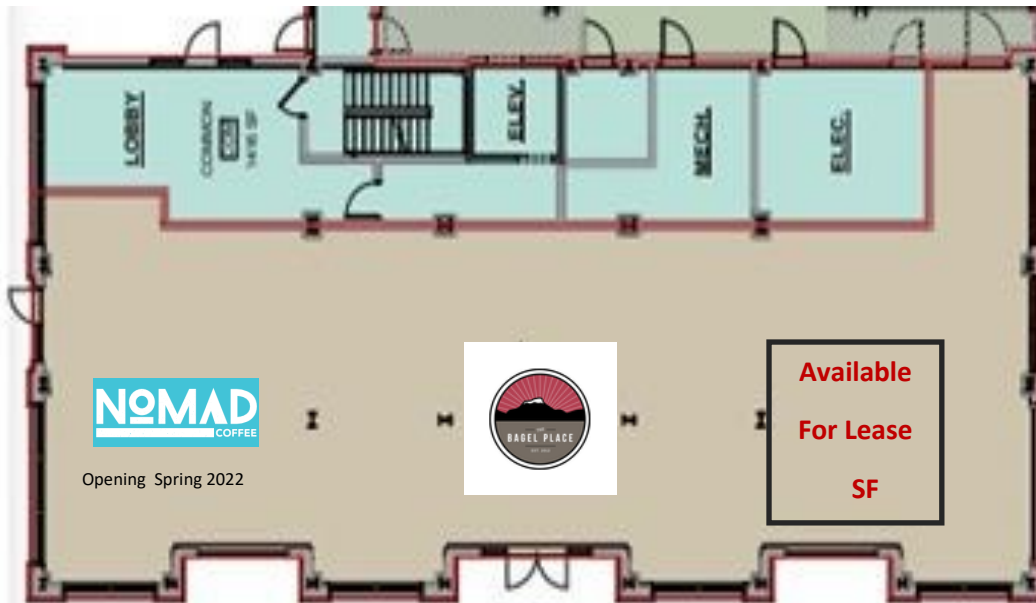
Meg McGovern

Meg@DonahueAssociatesVT.com

FOR LEASE—RESTAURANT

3 Maple Street, Essex Jct

FLOOR PLAN





FOR LEASE—RESTAURANT

3 Maple Street, Essex Jct

PHOTOS



The data contained herein is for informational purposes only and is not represented to be error free. We have made every effort to obtain information regarding listings from sources deemed reliable. However, we cannot warrant the complete accuracy thereof subject to errors, omissions, change of price, rental or other conditions, prior sale, lease or financing, or withdrawal without notice. Notwithstanding, any attachments of scanned and signed documents to the contrary, nothing contained herein constitutes nor is intended to constitute an offer, inducement, promise, or contract of any kind. Only signed documents are adequate to enter into a contract, or to modify, amend, change or provide any required notice to a previously signed contract.