



SUMMARY

Available Offices:

- Office 103 \$500
- Office 107 \$550
- Office 104 \$500

Overview:

Excellent opportunity for your business to locate in one of Burlington's landmark properties enjoying its' high exposure and the easy access for customers, clients and all that Burlington offers. Fully renovated historic high character office space with a warm and charming feel. Easy walk to Church Street Marketplace,

CONTACT US

Donahue & Associates
(802) 862-6880
www.donahuessociatesvt.com



Meg McGovern
Meg@donahueassociatesvt.com

Lease Price: \$500-\$550/Month for one office, gross

Parking: Available in close proximity
<https://parkburlington.com>

Zoning: FD6—Currently general and medical office.

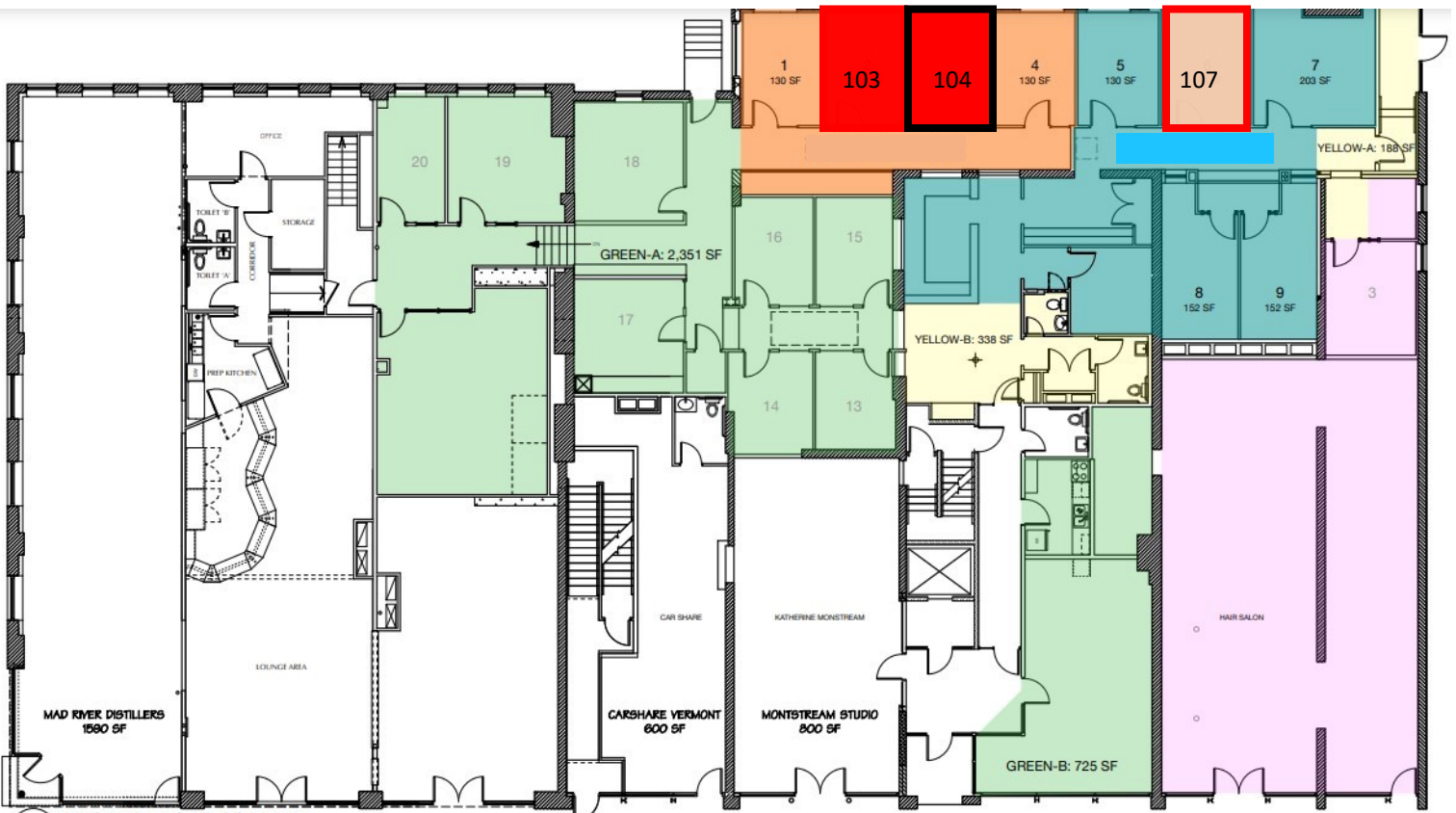


DONAHUE ASSOCIATES
COMMERCIAL REAL ESTATE ADVISORS

FOR LEASE
Single Offices

125 St Paul Street, Burlington, 05401

Floor Plan



EXISTING FIRST FLOOR PLAN

Scale: 3/32" = 1'-0"



PARK PLACE

BURLINGTON, VERMONT

© 2013 ALL RIGHTS RESERVED
DUNCAN WISNIEWSKI ARCHITECTURE
A Professional Corporation

Duncan Wisniewski ARCHITECTURE
DATE: 02.27.2016
203 SOUTH CHAMPLAIN STREET
BURLINGTON, VERMONT 05401
T. 802.554.8553

A1-0.0



**DONAHUE
ASSOCIATES**
COMMERCIAL REAL ESTATE ADVISORS

FOR LEASE

Single Offices

125 St Paul Street, Burlington, VT

Photos



The data contained herein is for informational purposes only and is not represented to be error free. We have made every effort to obtain information regarding listings from sources deemed reliable. However, we cannot warrant the complete accuracy thereof subject to errors, omissions, change of price, rental or other conditions, prior sale, lease or financing, or withdrawal without notice. Notwithstanding, any attachments of scanned and signed documents to the contrary, nothing contained herein constitutes nor is intended to constitute an offer, inducement, promise, or contract of any kind. Only signed documents are adequate to enter into a contract, or to modify, amend, change or provide any required notice to a previously signed contract.