

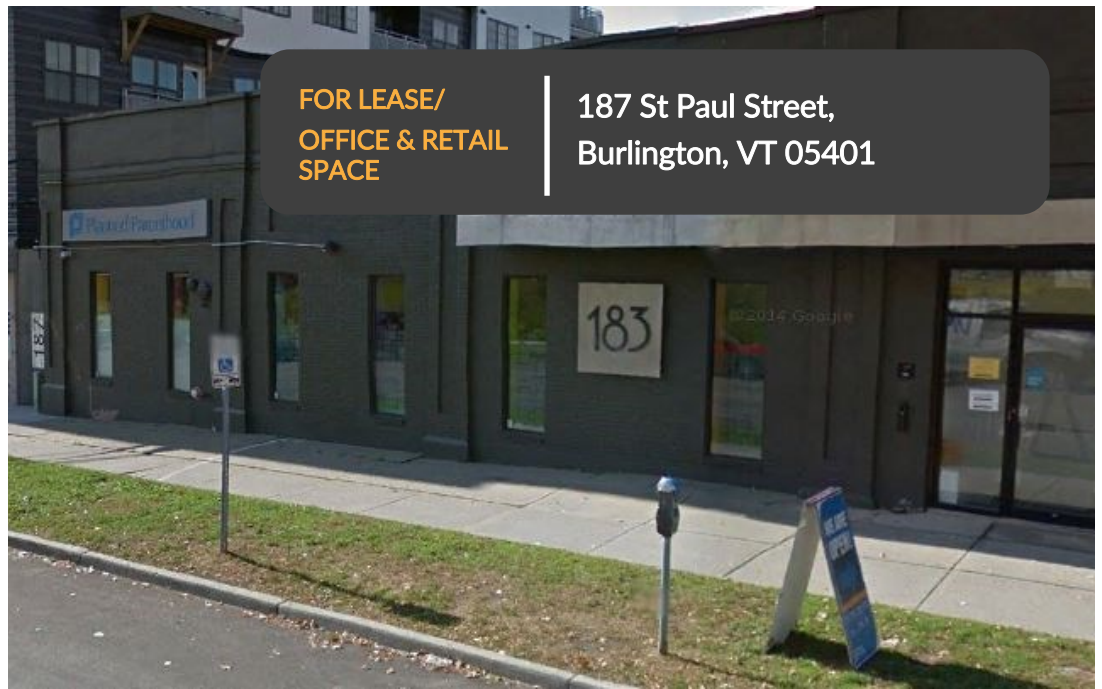


DONAHUE
ASSOCIATES

COMMERCIAL REAL ESTATE ADVISORS

802-862-6880

www.donahueassociatesvt.com



**FOR LEASE/
OFFICE & RETAIL
SPACE**

**187 St Paul Street,
Burlington, VT 05401**



SUMMARY

With a great location in downtown Burlington, close to the Church Street Marketplace, restaurants, offices, and nearby parking garage, this unique and bright small office is available for your office, retail, hospitality, entertainment, or civic enterprise.

Parking: Spaces available on-site for an additional fee.

Zoning: FD5 – Downtown Center. Approved uses include, but are not limited to, office, retail, service, hospitality, entertainment, and civic functions.

SUITE 103

999 SF— Bright, open space, with newer flooring and lighting.
Available now.

Lease Price: \$12.00/SF, NNN estimated \$9/SF. Pro-rata electric and gas, estimated \$2.25/SF.

SUITE 100

1604 SF
Available 11/30/2023.

Lease Price: \$ Market, NNN estimated \$9/SF. Pro-rata electric and gas, estimated \$2.25/SF.

CONTACT US

Donahue & Associates

(802) 862-6880

www.donahueassociatesvt.com



Meg McGovern

Meg@donahueassociatesvt.com



**FOR LEASE/
OFFICE & RETAIL SPACE
187 St Paul Street, Burlington, VT**

FLOOR PLAN



The data contained herein is for informational purposes only and is not represented to be error free. We have made every effort to obtain information regarding listings from sources deemed reliable. However, we cannot warrant the complete accuracy thereof subject to errors, omissions, change of price, rental or other conditions, prior sale, lease or financing, or withdrawal without notice. Notwithstanding, any attachments of scanned and signed documents to the contrary, nothing contained herein constitutes nor is intended to constitute an offer, inducement, promise, or contract of any kind. Only signed documents are adequate to enter into a contract, or to modify, amend, change or provide any required notice to a previously signed contract.