



**DONAHUE
ASSOCIATES**
COMMERCIAL REAL ESTATE ADVISORS

802-862-6880

www.donahueassociatesvt.com

**FOR LEASE/
RETAIL SPACE**

100 Dorset Street,
South Burlington, VT 05403



SUMMARY

Available Suites: 2,000 SF and 14,722 SF Retail Space.
Option to combine for 16,722 SF

Overview: Prime retail and office location directly on Dorset Street!
Great exposure and traffic counts! Easy access to I-89 and Downtown Burlington and South Burlington. Hub for local shoppers!

Surrounding tenants include T-Mobile (the newest addition!) Barnes & Noble, Edible Arrangements, Target, University Mall, Eco Bean, H&M, Verizon, Health Living, Trader Joe's, CVS, Sears.

Lease Price: \$22.00—\$25.00/SF NNN (est. at \$6.19/SF)

Parking: Ample on-site.

Zoning: Transect Zone 5, part of the South Burlington Form Based Code District. For further details see Table 8-4, Page 110 on the South Burlington LDR.



CONTACT US

Donahue & Associates

(802) 862-6880

www.donahueassociatesvt.com



Steve Donahue

Steve@donahueassociatesvt.com

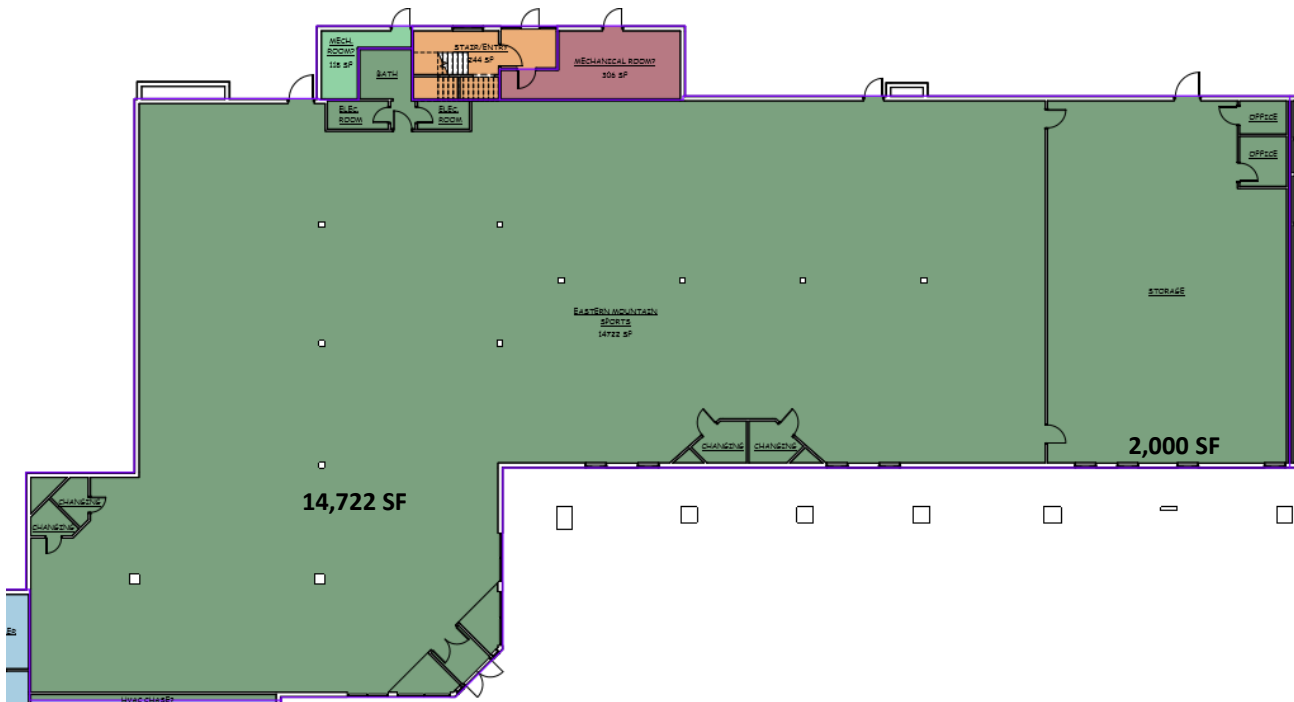


**DONAHUE
ASSOCIATES**
COMMERCIAL REAL ESTATE ADVISORS

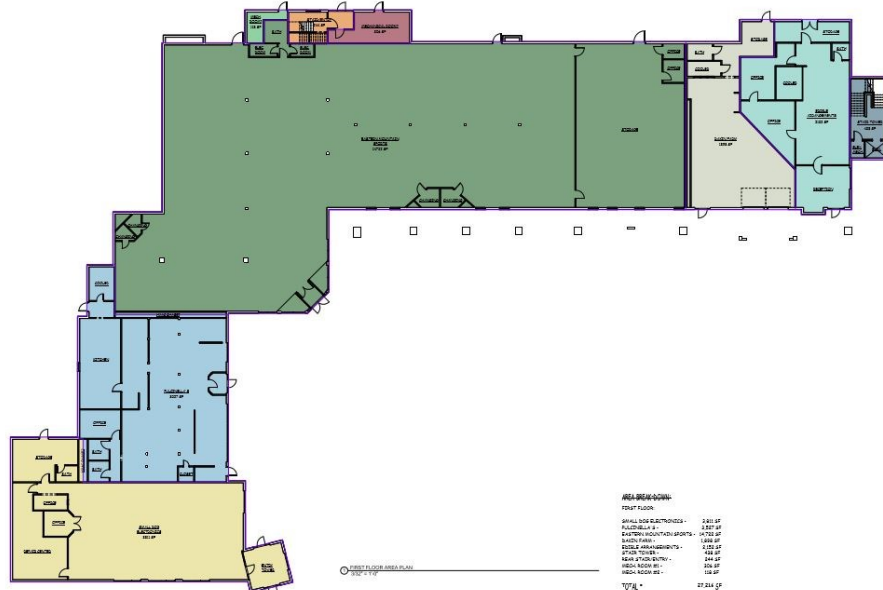
FOR LEASE/ RETAIL SPACE

100 Dorset Street, South Burlington, VT

FLOOR PLAN—1st



FLOOR PLAN—Full Building





FOR LEASE/ RETAIL SPACE

100 Dorset Street, South Burlington, VT

MAP



The data contained herein is for informational purposes only and is not represented to be error free. We have made every effort to obtain information regarding listings from sources deemed reliable. However, we cannot warrant the complete accuracy thereof subject to errors, omissions, change of price, rental or other conditions, prior sale, lease or financing, or withdrawal without notice. Notwithstanding, any attachments of scanned and signed documents to the contrary, nothing contained herein constitutes nor is intended to constitute an offer, inducement, promise, or contract of any kind. Only signed documents are adequate to enter into a contract, or to modify, amend, change or provide any required notice to a previously signed contract.