



**DONAHUE  
ASSOCIATES**  
COMMERCIAL REAL ESTATE ADVISORS

802-862-6880

[www.donahueassociatesvt.com](http://www.donahueassociatesvt.com)

**FOR LEASE  
OFFICE SPACE**

**Maple Tree Place,  
Williston, Vermont**



## SUMMARY

### 2nd floor office spaces available—

**Building C** - Former corporate regional offices for two national companies with views overlooking the plaza green and mountains or take advantage of suite with in place work stations. Combine suites to get up over 12,000 SF of ready to lease office space.

Suites available - 5,394 SF, 2,617 SF AND 6,685 SF

**Building F**—Multiple suites enjoying ample natural light, windows overlooking the green and a mix of private offices and open flex space.

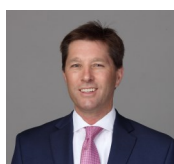
Suites available - 6,721 SF, 3,644 SF, 1,169 SF, 983 SF.

**Lease Price:** - \$22.00—\$24/SF GROSS

## CONTACT US

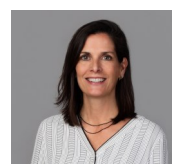


[www.donahueassociatesvt.com](http://www.donahueassociatesvt.com)



**Steve Donahue**

[Steve@donahueassociatesvt.com](mailto:Steve@donahueassociatesvt.com)  
(802) 862-6880



**Meg McGovern**

[Meg@donahueassociatesvt.com](mailto:Meg@donahueassociatesvt.com)

**Overview:** Offices offer a mix of open layouts, private offices, great natural light and easy access to the shops and amenities that Maple Tree Place has to offer! Enjoy easy access to I-89 and Taft Corners.

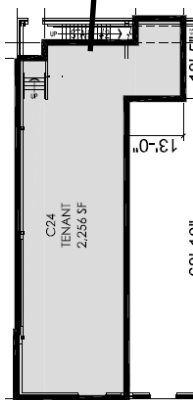
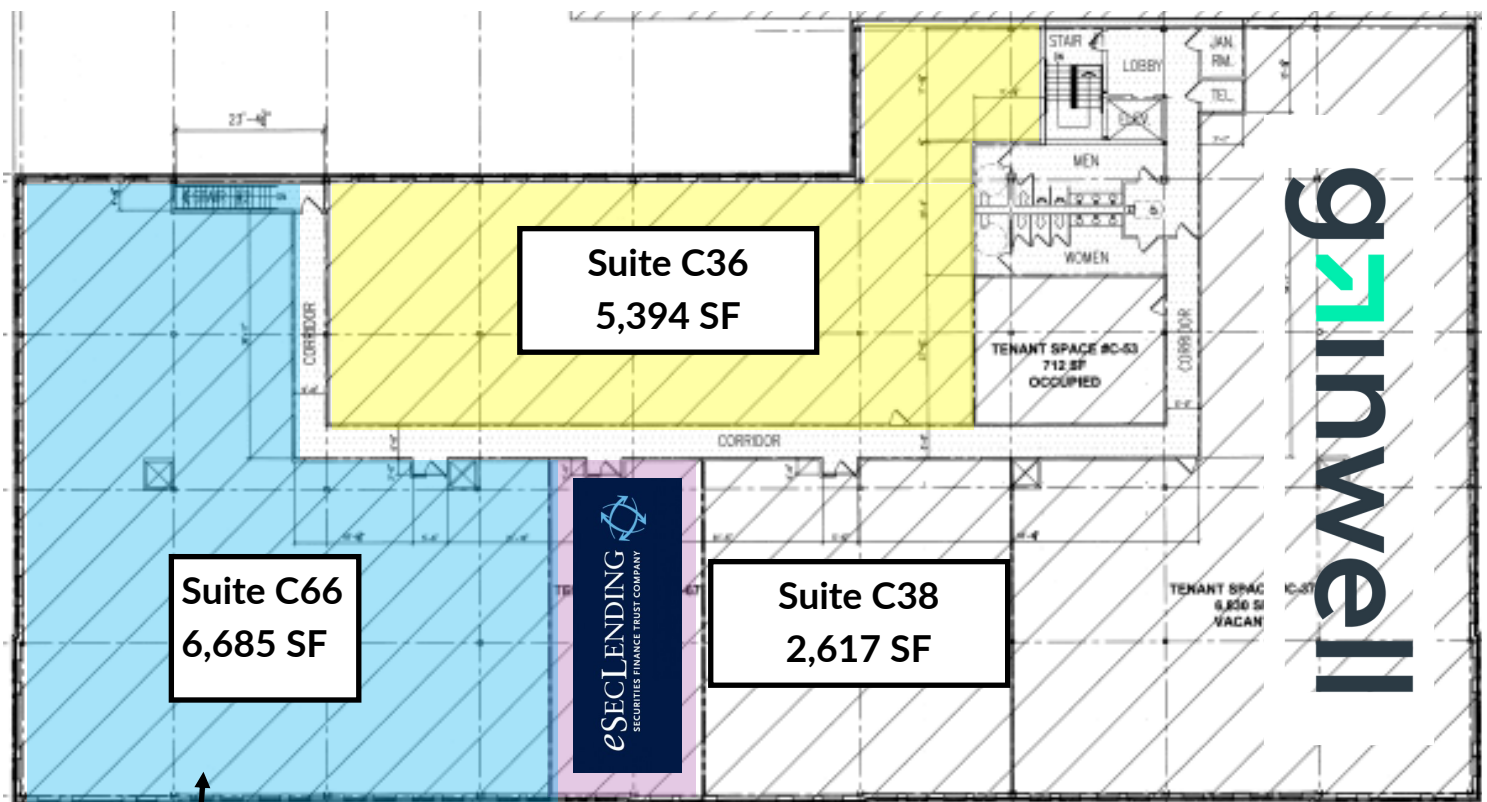
Maple Tree Place is favorably positioned in the market and includes an attractive mix of dining, shopping, and entertainment with a state-of-the-art movie complex and family-friendly events. With a strong mix of retailers including Shaw's, Best Buy, Ulta, Boot Barn, Bob's Discount Furniture, Dick's Sporting Goods, Starbucks, Bliss Bee, GameStop, Guitar Center, McGillicuddy's, Torrid, and Carters. Maple Tree Place continues to attract an audience from both local and neighboring areas. Additionally, the center hosts a concert series each summer with live music, dancing, and dinner.

**Zoning:** Taft Corners Zoning District - Retail, General Office, Medical Office, Family/Child Care, Professional Business Services, Technical and Scientific Services, Arts, Entertainment, and Recreation.

# FOR LEASE/ OFFICE SPACE

Maple Tree Place, Williston, 05495 VT

## FLOOR PLAN—2nd



Below the 6,355 SF Second Floor  
First floor -2,256 SF retail/office

## Building C

28 Walnut Street

Suite C36—5,394 SF

Suite C66—6,355 SF

Suite C38—2,610 SF

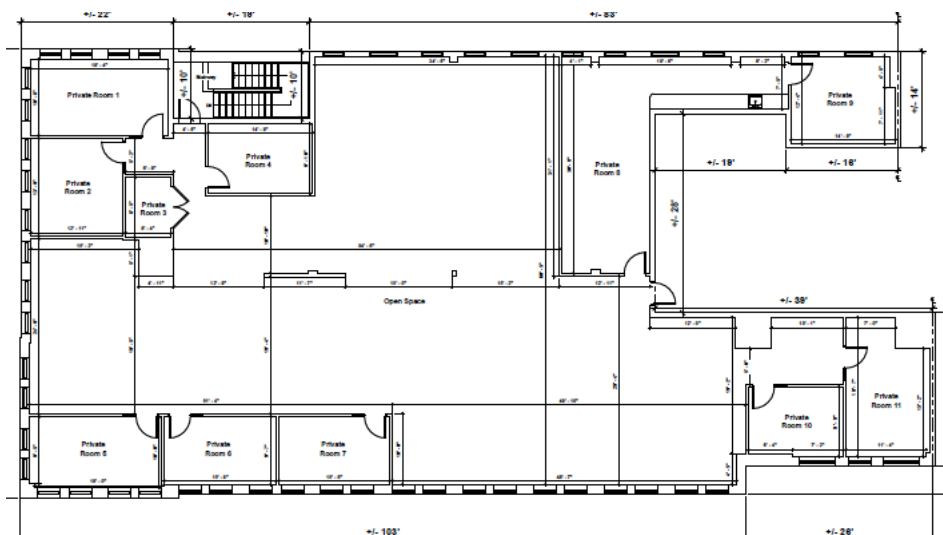


**DONAHUE**  
ASSOCIATES  
COMMERCIAL REAL ESTATE ADVISORS

# FOR LEASE/ OFFICE SPACE Maple Tree Place, Williston, 05495 VT

## FLOOR PLAN –(Building F) 121 Connor Way

### Building F—Suite 240 6,721SF



### More Suites! 983 SF, 1,169 SF, 1,489 SF, 3,644 SF





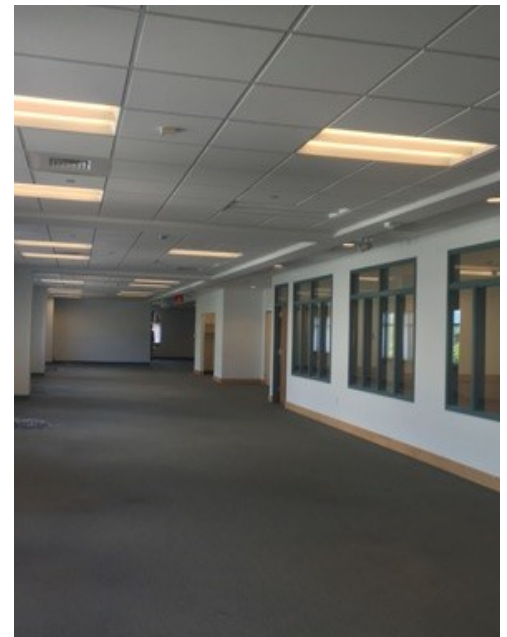
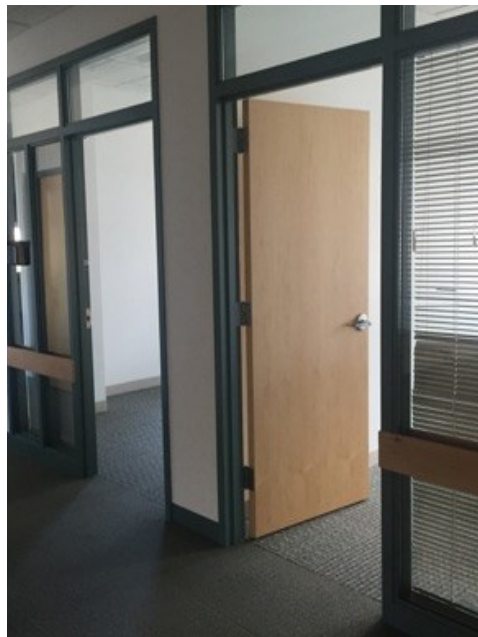
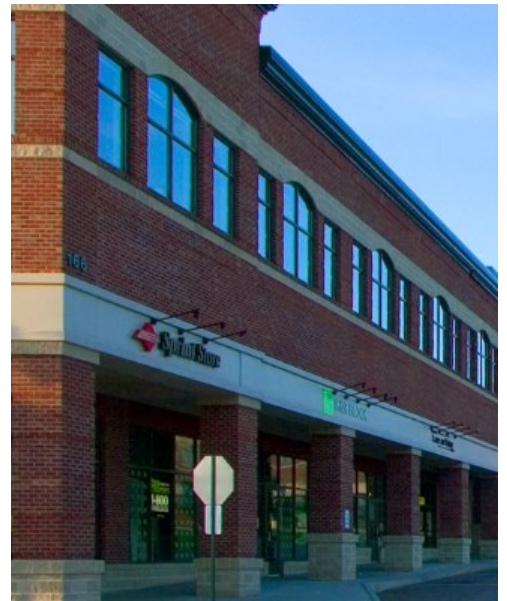


**DONAHUE**  
ASSOCIATES  
COMMERCIAL REAL ESTATE ADVISORS

**FOR LEASE/  
OFFICE SPACE**

**Maple Tree Place, Williston, 05495 VT**

## PHOTOS





FOR LEASE/  
OFFICE SPACE

Maple Tree Place, Williston, 05495 VT

CURRENT TENANTS

