



**DONAHUE
ASSOCIATES**

COMMERCIAL REAL ESTATE ADVISORS

802-862-6880

www.donahueassociatesvt.com

**FOR LEASE
OFFICE SPACE**

**Maple Tree Place,
Williston, Vermont**



SUMMARY

2nd floor office spaces available—

Building C - Former corporate regional offices for two national companies with views overlooking the plaza green and mountains or take advantage of suite with in place work stations. Nearby are Best Buy, Torrid, Agave, AAA, McGillicuddy's, and Grazers along with many others. Combine suites to get up to 11,749 SF of ready to lease office space.

Suites available -5,394 SF AND 6,355 SF

Building F - These suites are above Asiana House, Men's Wearhouse, Belle's Café and Vermont Yogurt. Available spaces include -

Suite 240— 6,685 SF

Suite F12—1,221

Lease Price: - 22.00/SF GROSS

Overview: Offices offer a mix of open layouts, private offices, great natural light and easy access to the shops and amenities that Maple Tree Place has to offer! Enjoy easy access to I-89 and Taft Corners.

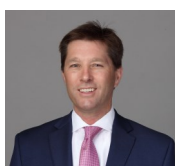
Maple Tree Place is favorably positioned in the market and includes an attractive mix of dining, shopping, and entertaining with a state-of-the-art movie complex and family-friendly events. With a strong mix of retailers including the Christmas Tree Shops, Shaw's, Best Buy, Ulta, and Dick's Sporting Goods, Maple Tree Place continues to attract an audience from both local and neighboring areas. Additionally, the center hosts a concert series each summer with live music, dancing, and dinner.

Zoning: Taft Corners Zoning District - Retail, General Office, Medical Office, Family/Child Care, Professional Business Services, Technical and Scientific Services, Arts, Entertainment, and Recreation.

CONTACT US



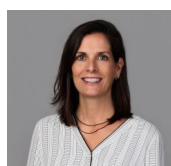
www.donahueassociatesvt.com



Steve Donahue

Steve@donahueassociatesvt.com

(802) 862-6880



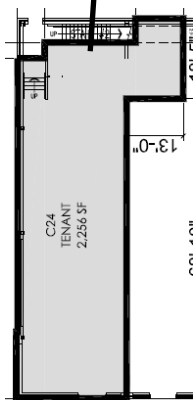
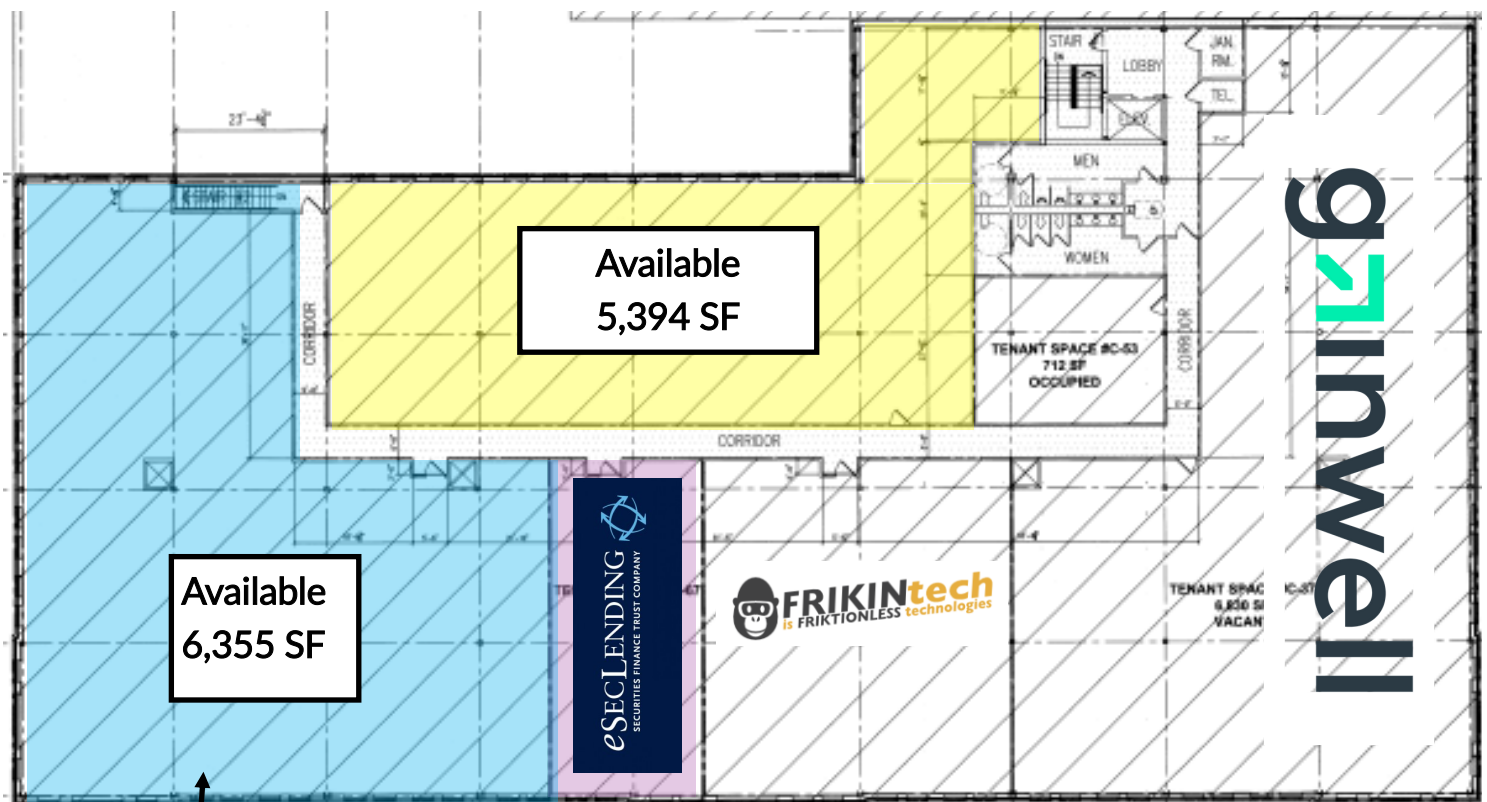
Meg McGovern

Meg@donahueassociatesvt.com

FOR LEASE/ OFFICE SPACE

Maple Tree Place, Williston, 05495 VT

FLOOR PLAN—2nd



Below the 6,355 SF Second Floor
First floor -2,256 SF retail/office

Building C

28 Walnut Street

Suite C36—5,394 SF

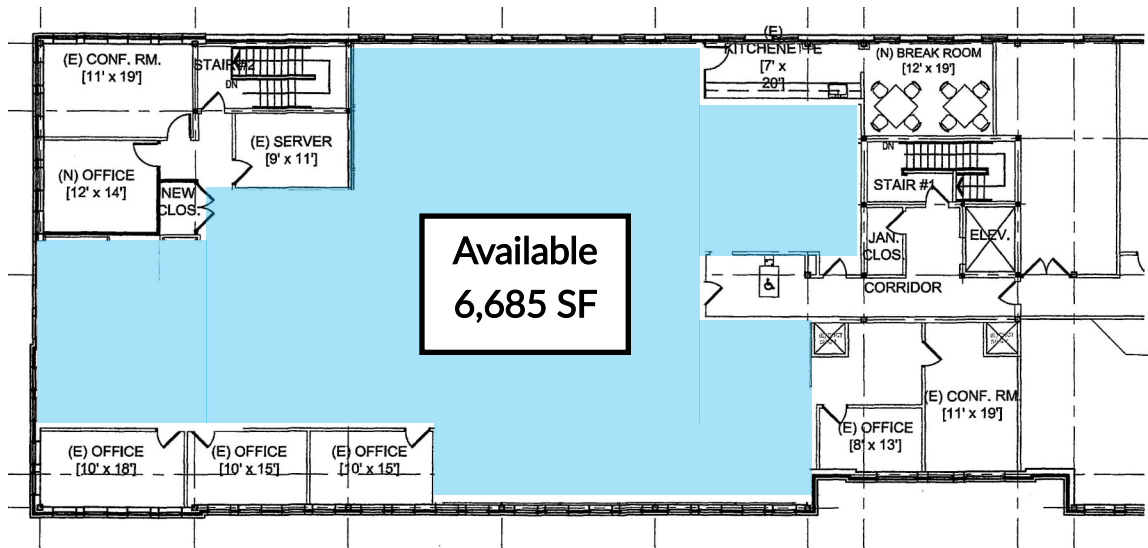
Suite C66—6,355 SF



FOR LEASE/ OFFICE SPACE Maple Tree Place, Williston, 05495 VT

FLOOR PLAN –Building F

Building F—Suite 240



Building F
121 Connor Way
Suite 240 —6,685 SF
Suite F11—1,221 SF

Building F—Suite12

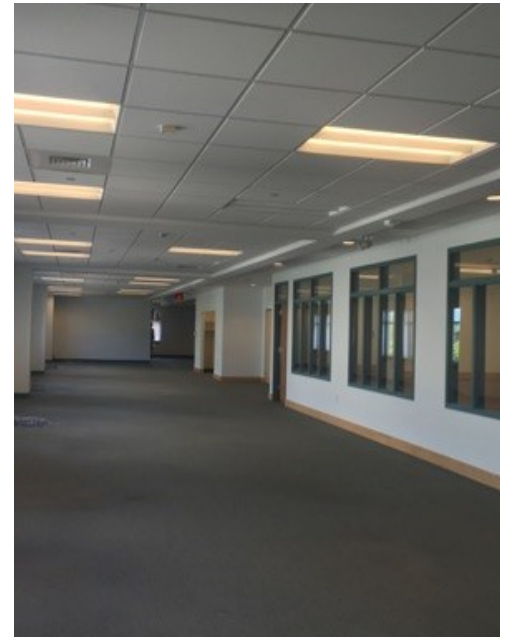
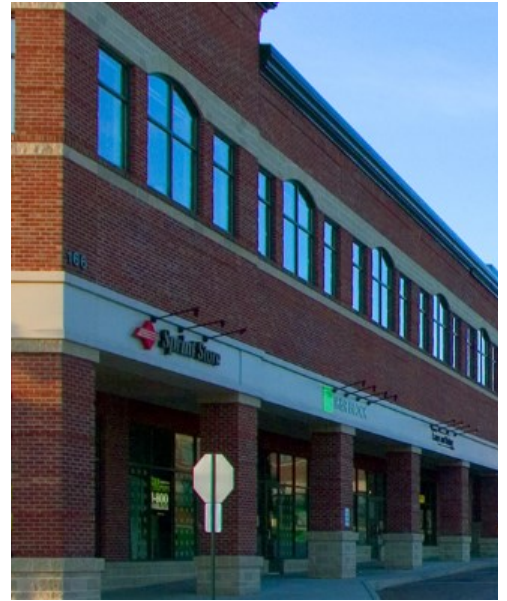




FOR LEASE/ OFFICE SPACE

Maple Tree Place, Williston, 05495 VT

PHOTOS





DONAHUE
ASSOCIATES
COMMERCIAL REAL ESTATE ADVISORS

FOR LEASE/
OFFICE SPACE

Maple Tree Place, Williston, 05495 VT

CURRENT TENANTS

