



**DONAHUE  
ASSOCIATES**  
COMMERCIAL REAL ESTATE ADVISORS

802-862-6880

[www.donahueassociatesvt.com](http://www.donahueassociatesvt.com)

**FOR LEASE  
OFFICE SPACE**

**Maple Tree Place,  
Williston, Vermont**



## SUMMARY

### 2nd floor office spaces available—

**Building C** - These office spaces are above Agave, AAA, McGilicuddy's, and New Balance. - Combine suites to get up to 14,000 SF of ready to lease office space

Suites available—1,280 SF; 5,394 SF; 6,355 SF

**Building F** - These suites are above Asiana House, Men's Wearhouse, Belle's Café and Vermont Yogurt. Available spaces include -

Suite 240— 6,678 SF

Suite F11 - 1,509 SF

Suite F12—1,221

**Lease Price:** -- 22.00/SF GROSS

**Parking:** Free and ample on-site parking

**Overview:** Offices offer a mix of open layouts, private offices, great natural light and easy access to the shops and amenities that Maple Tree Place has to offer! Enjoy easy access to I-89 and Taft Corners.

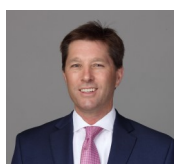
Maple Tree Place is favorably positioned in the market and includes an attractive mix of dining, shopping, and entertaining with a state-of-the-art movie complex and family-friendly events. With a strong mix of retailers including the Christmas Tree Shops, Shaw's, Best Buy, Ulta, and Dick's Sporting Goods, Maple Tree Place continues to attract an audience from both local and neighboring areas. Additionally, the center hosts a concert series each summer with live music, dancing, and dinner.

**Zoning:** Taft Corners Zoning District - Retail, General Office, Medical Office, Family/Child Care, Professional Business Services, Technical and Scientific Services, Arts, Entertainment, and Recreation.

## CONTACT US



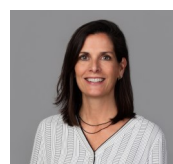
[www.donahueassociatesvt.com](http://www.donahueassociatesvt.com)



**Steve Donahue**

[Steve@donahueassociatesvt.com](mailto:Steve@donahueassociatesvt.com)

(802) 862-6880



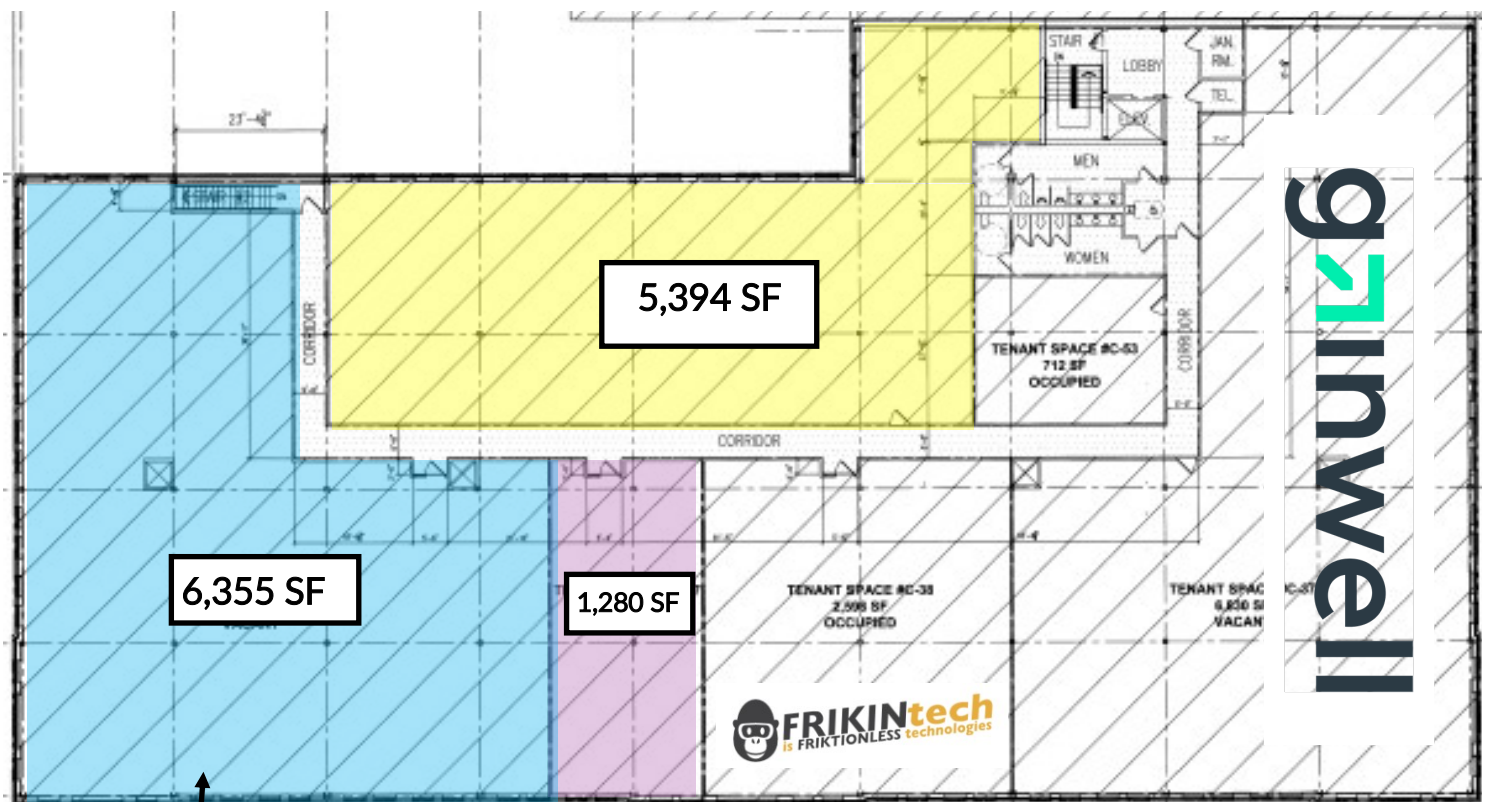
**Meg McGovern**

[Meg@donahueassociatesvt.com](mailto:Meg@donahueassociatesvt.com)

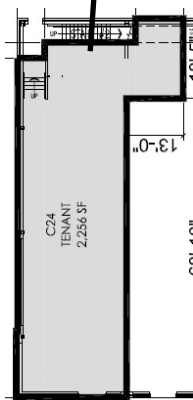
# FOR LEASE/ OFFICE SPACE

Maple Tree Place, Williston, 05495 VT

## FLOOR PLAN—2nd



**glinwell**



Below the 6,355 SF Second Floor Space is 2,256 SF retail/office space.

### Building C

*28 Walnut Street*

Suite C36—5,394 SF

Suite C66—6,355 SF

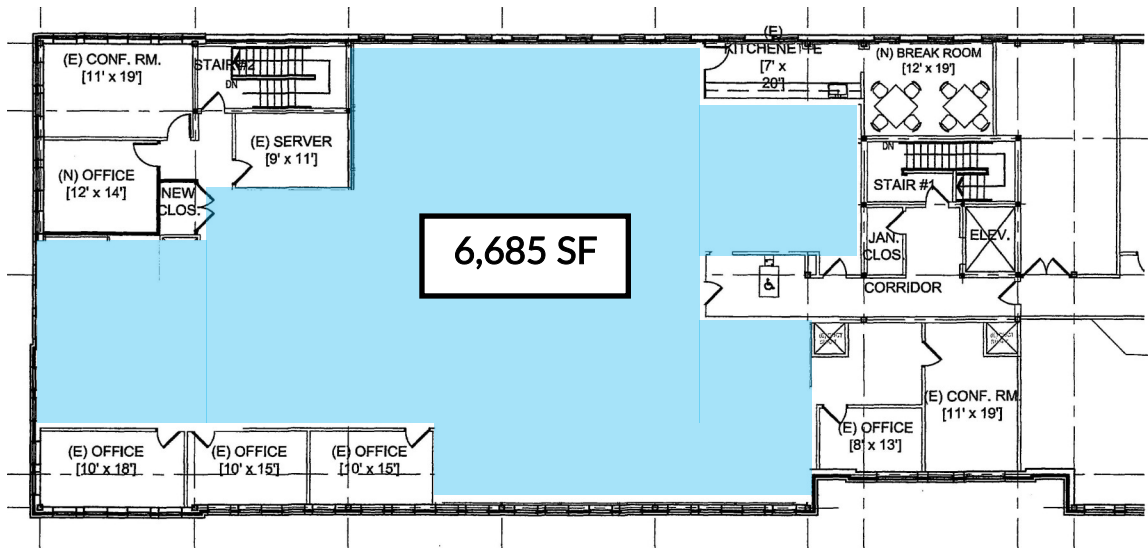
Suite C67—1,280 SF



# FOR LEASE/ OFFICE SPACE Maple Tree Place, Williston, 05495 VT

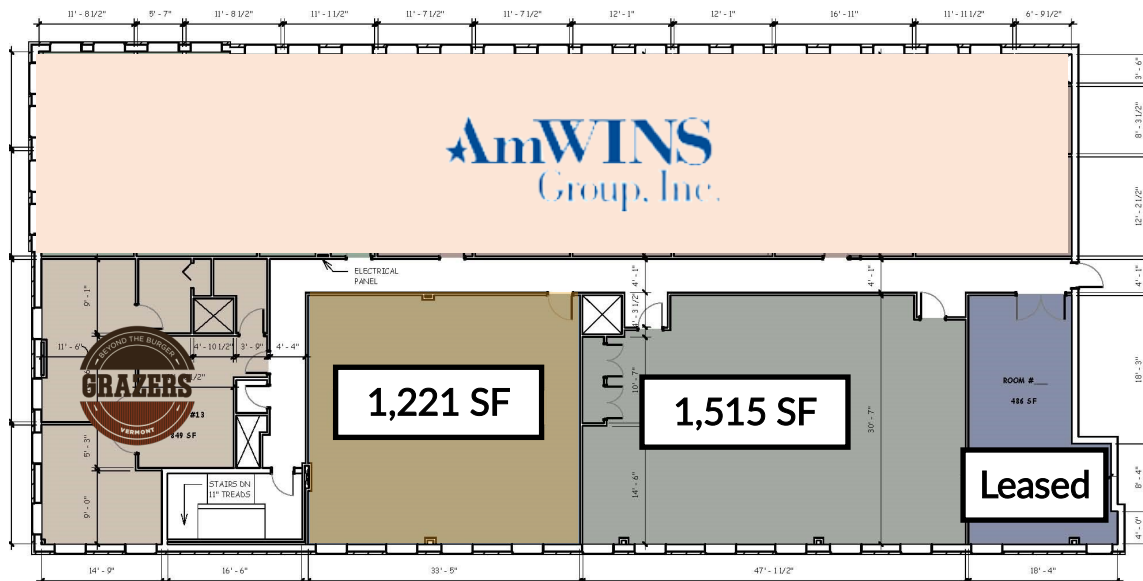
## FLOOR PLAN –Building F

### Building F—Suite 240



**Building F**  
*121 Connor Way*  
Suite F09—6,685 SF  
Suite F11—1,221 SF  
Suite F14—1,515 SF

### Building F—Suite12





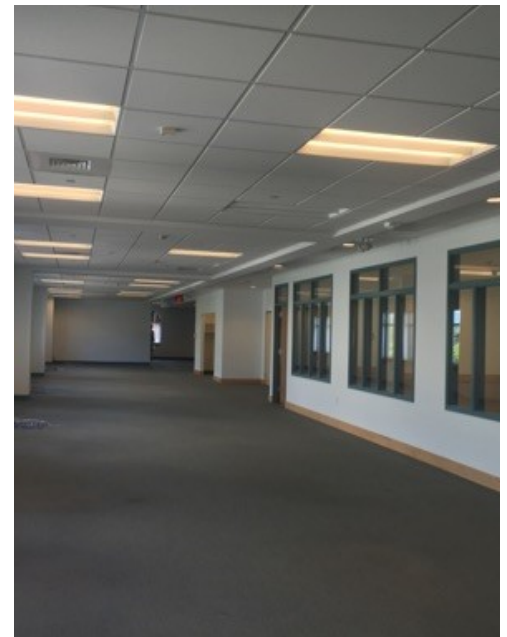
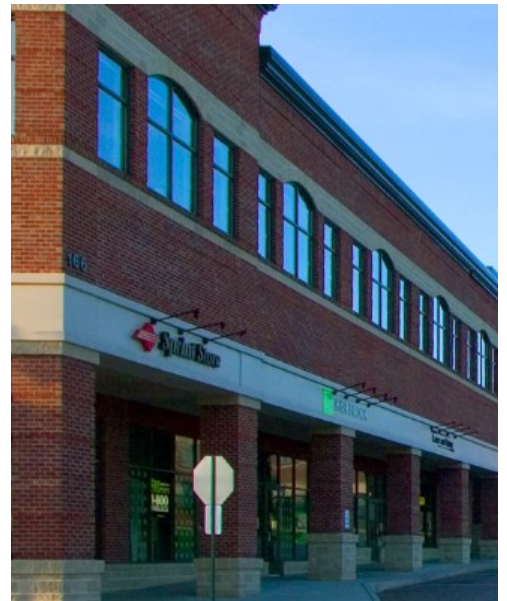


**DONAHUE**  
ASSOCIATES  
COMMERCIAL REAL ESTATE ADVISORS

# FOR LEASE/ OFFICE SPACE

Maple Tree Place, Williston, 05495 VT

## PHOTOS





# FOR LEASE/ OFFICE SPACE

Maple Tree Place, Williston, 05495 VT

## CURRENT TENANTS

