



DONAHUE ASSOCIATES
COMMERCIAL REAL ESTATE ADVISORS

802-862-6880

www.donahueassociatesvt.com

RETAIL
FOR LEASE

Maple Tree Place
Williston VT 05495



SUMMARY OF AVAILABLE RETAIL SPACES

Building A	184-186 Boxwood St.	9,309 SF
	31 Hawthorne St.	1,600 SF
Building B	16 Walnut Walkway	1,628 SF
Building C	28 Walnut St	Suite 110 - 2,279 SF
Building D	166 Sycamore St	Suite 110 - 1,644 SF Suite 160 - 669 SF
Building F	121 Connor Way	Suite 140- 1,512 SF Suite 160 -1,264 SF

Overview: Maple Tree Place is a destination retail center with an attractive mix of dining, shopping, and entertainment, and family-friendly events. The strong mix of retailers including Dick's Sporting Goods, Shaw's, Best Buy, Ulta, Staple's, Boot Barn, Bob's Discount Furniture, and Old Navy, combined restaurants Chili's, Longhorn Steakhouse, Bliss Bee, Starbucks, Maple Tree Place attracts shoppers and diners from both local, travelers, and the greater northern Vermont area.

Lease Price: \$30-45/SF NNN (est. \$7.75/SF)

Other Tenants Include: Orange Theory, Carter's, Torrid, Majestic 10, Escape Room, Chili's, Firehouse Subs, and more!

Coming summer of 2026 J. Crew Factory!

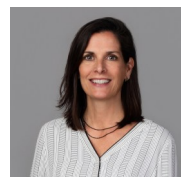
Parking: Ample on-site parking

Zoning: Taft Corners Zoning District - approved uses include, but are not limited to, Retail, General Office, Medical Office, Family/ Child Care, Arts, Entertainment, and Recreation.

CONTACT US



Steve Donahue
Steve@donahueassociatesvt.com



Meg McGovern
Meg@donahueassociatesvt.com

FOR LEASE/ RETAIL SPACE Maple Tree Place, Williston VT

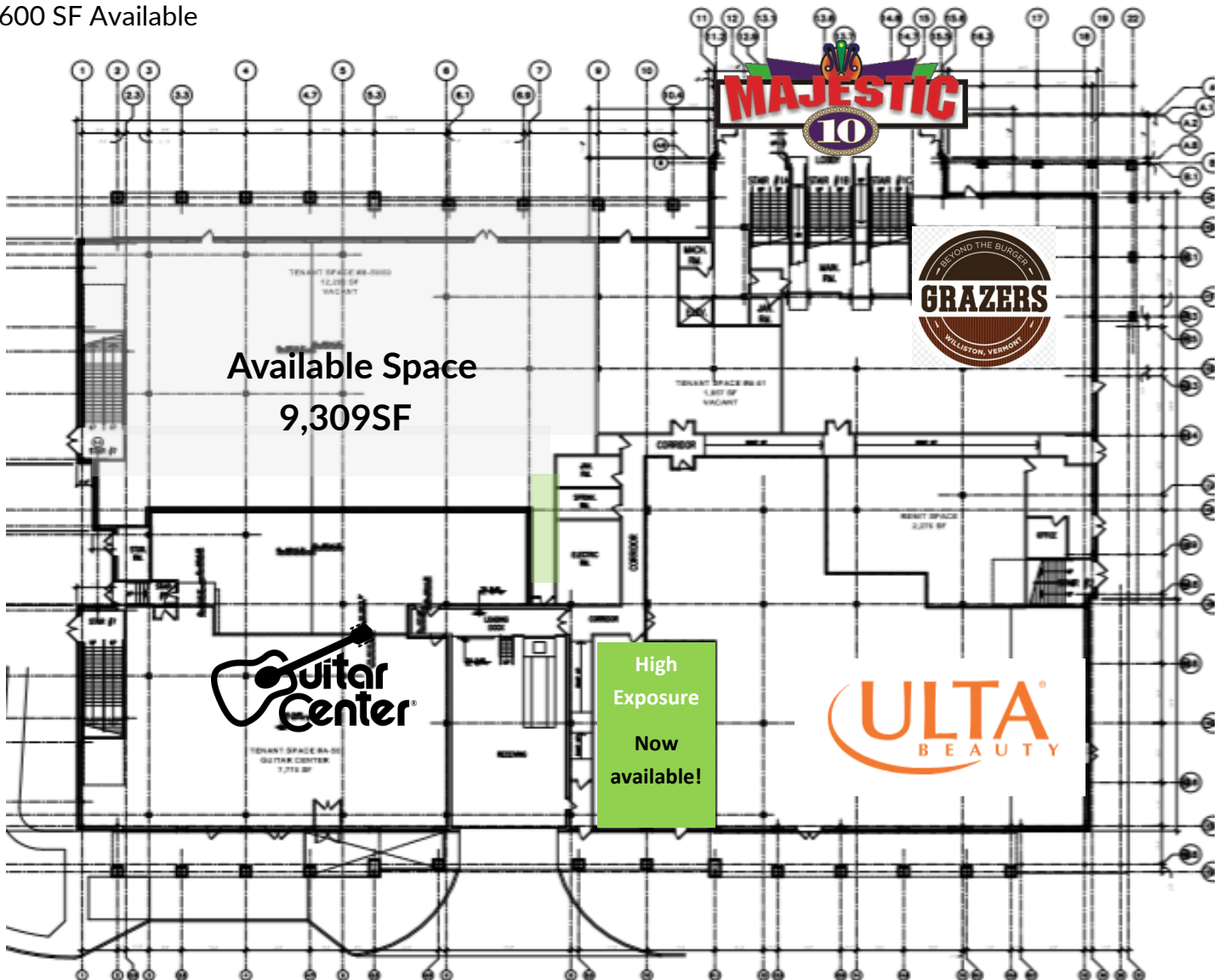
BUILDING A FLOOR PLAN

BUILDING A

184-186 BOXWOOD STREET

9,309 SF Available

1,600 SF Available



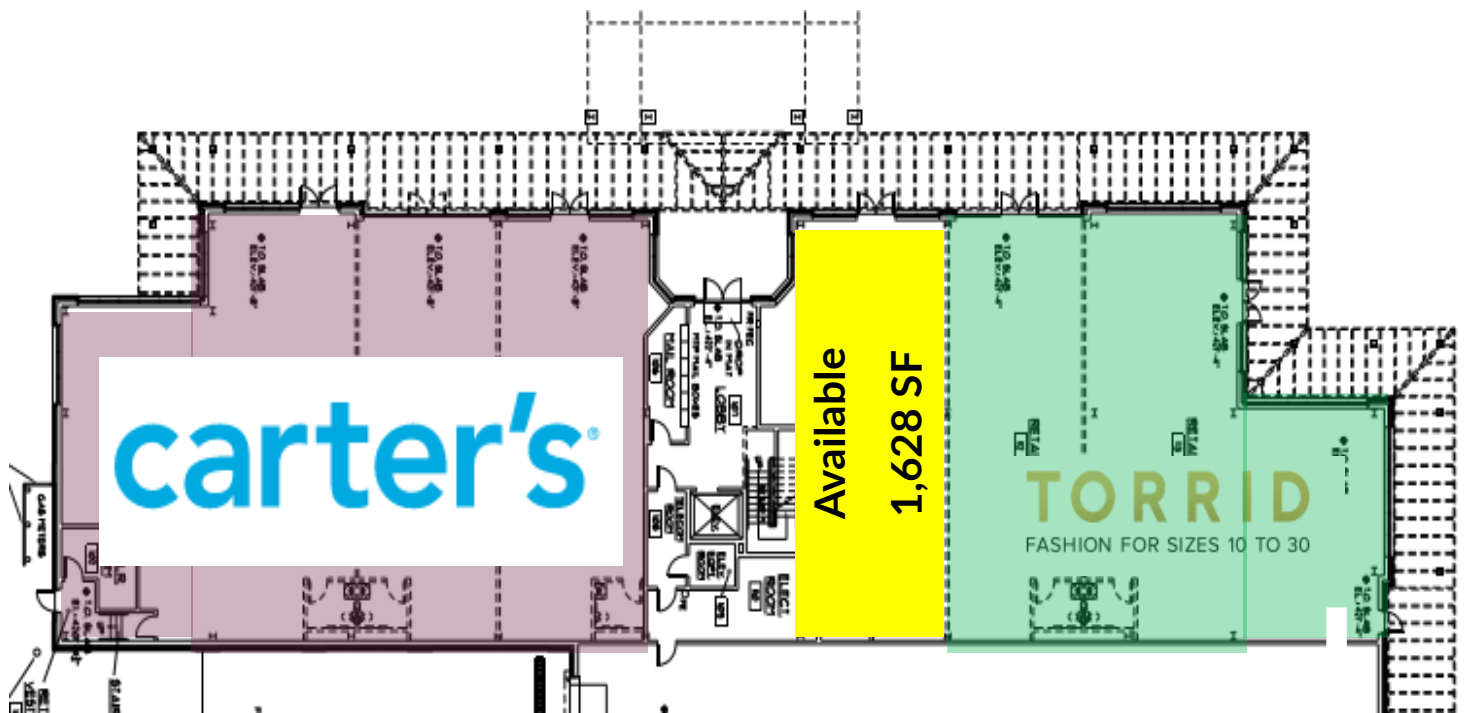
FOR LEASE/ RETAIL SPACE Maple Tree Place, Williston VT

BUILDING B FLOOR PLAN

BUILDING B

16 WALNUT WALKWAY

1,628 SF Available





DONAHUE
ASSOCIATES
 COMMERCIAL REAL ESTATE ADVISORS

FOR LEASE/ RETAIL SPACE Maple Tree Place, Williston VT

BUILDING C FLOOR PLAN

BUILDING C

28 WALNUT STREET

C24 - 2,256 SF

C32 - 1,488 SF

C33 - 1,227 SF



FOR LEASE/ RETAIL SPACE Maple Tree Place, Williston VT

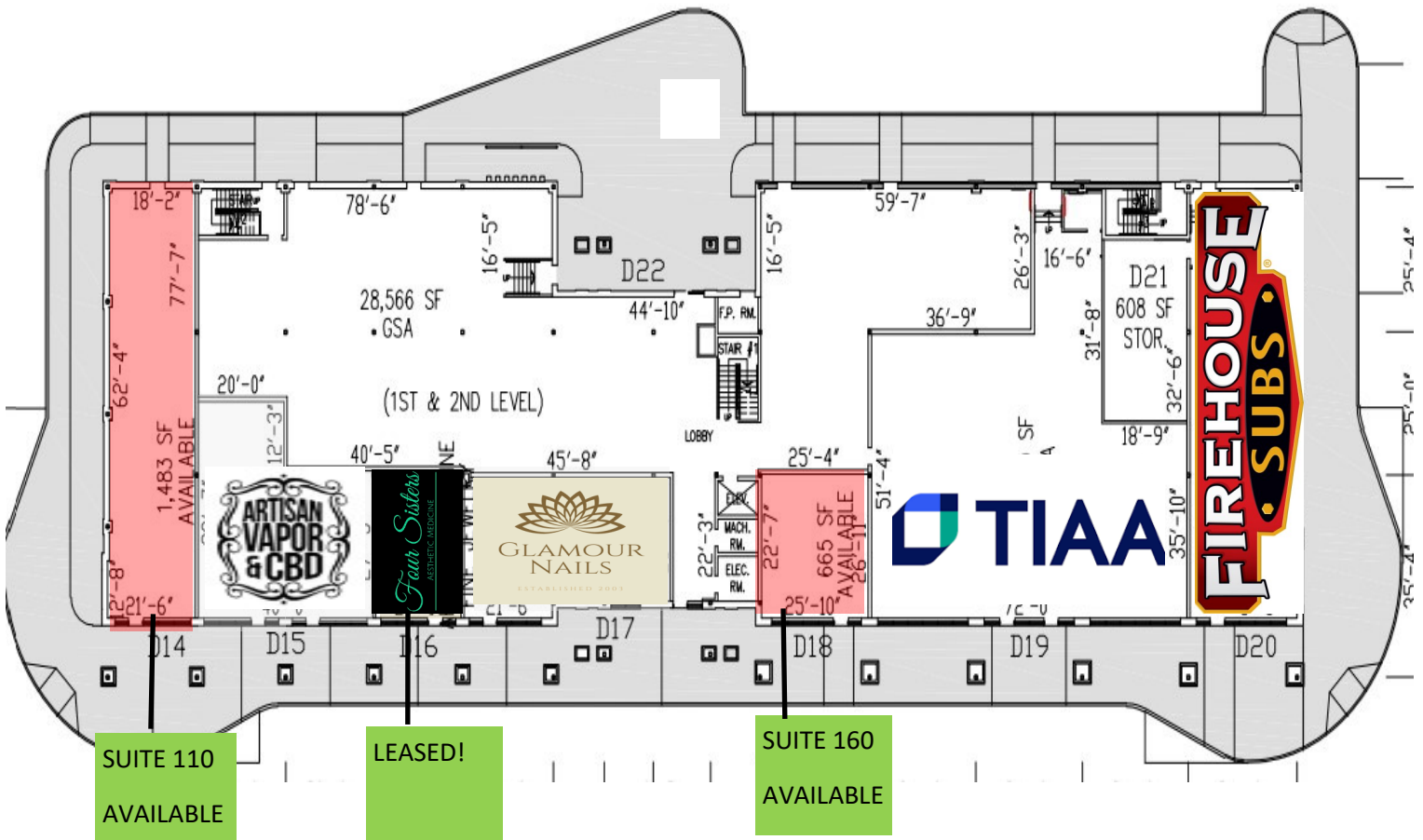
BUILDING D FLOOR

BUILDING D

166 SYCAMORE STREET

Suite 110 - 1,483 SF

Suite 160 - 665 SF



FOR LEASE/ RETAIL SPACE Maple Tree Place, Williston VT

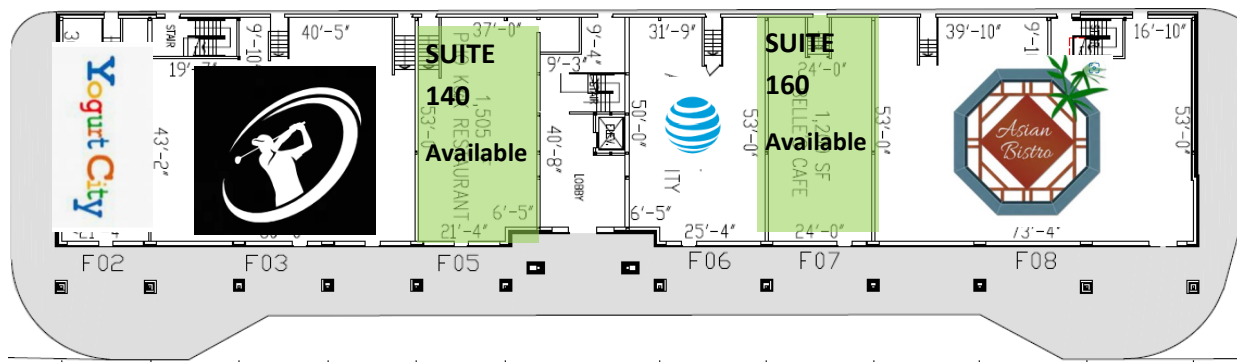
BUILDING F FLOOR PLAN

BUILDING F

121 CONNOR WAY

Suite 140 - 1,512 SF

Suite 160 - 1,264 SF



FOR LEASE/ RETAIL SPACE

Maple Tree Place, Williston VT

Site Plan



Maple Tree Place

US Route 2 & Vermont Route 2A | Williston, VT 05495

Anchor Stores	Beauty	Men's and Womens Apparel	Restaurants & Specialty Food	Services	Offices	For retail leasing, please contact:
C34 Best Buy B44 Boot Barn/Bob's Disc. Furniture J40 Dick's J39 Old Navy J41 Staple's E01 Shaw's	A56 Ulta Beauty Entertainment A57 GameStop A58 Guitar Center A51 Escape Room A62 Majestic Cinema	A45 Carter's A49 Torrid C31 J.Crew Factory Jewelry D16 Argento Laraine Fine Jewelry	Pad 42 Longhorn Steakhouse Pad 43 Chill's M63 Bliss Bee M64 Starbucks A 54 Grazers C27 McGillicuddy's Irish Pub D20 Firehouse Subs F08 Asian Bistro F07 Vacant F02 Yogurt City	C29 AAA F06 AT & T Specialty Stores D15 Artisan Vape F03 Club Champion	B 52 GSA C 36 Wage Works D22 GSA	Steve Donahue stevedonahueassociatesvt.com 802.862-6880

* Specific names of tenants, their status, location and size are intended to be and should not be or have been relied upon, (iii) subject to change, modification and deletion by Landlord and (iii) not a representation or warranty as to the opening or continued operation of any store named or depicted on this site plan. The Donahue name, logo and other marks are trademarks and service marks being licensed to independent operating companies by CE Brands, LLC. Any particular obligation, service or product is the sole responsibility of the specific entity that incurs such obligation or supplies such service or product.



DONAHUE
ASSOCIATES
COMMERCIAL REAL ESTATE ADVISORS

FOR LEASE/ RETAIL SPACE Maple Tree Place, Williston VT

CENTER PHOTOS





FOR LEASE/
RETAIL SPACE
Maple Tree Place, Williston VT

CURRENT TENANTS

