



**DONAHUE ASSOCIATES**  
COMMERCIAL REAL ESTATE ADVISORS

802-862-6880

www.donahueassociatesvt.com

**FOR LEASE/  
RETAIL SPACE**

**Taft Corners Shopping Center,  
Williston, VT 05452**



## SUMMARY

### Available Suites:

- **Unit 22**—1,200 SF
- **Unit 24**—1,200 SF
- **Unit 25**—1,800 SF
- **Unit 28**—1,435 SF

### Overview:

- Easy access to I-89 and Taft Corners Commercial District
- Established and well known shopping center

**Lease Price:** \$16.50/SF NNN (est. \$5.07/SF) plus utilities

**Parking:** Ample on-site parking

**Zoning:** Taft Corners Zoning District - approved uses include, but are not limited to, Retail, General Office, Medical Office, Family/Child Care, Arts, Entertainment, and Recreation.

**Other Tenants:** Ninety-Nine Restaurant, Edward Jones Investments, Sakura Bana Sushi, The Town Cobbler, Once Upon A Child, Plato's Closet & many more!

## CONTACT US

**Donahue & Associates**

(802) 862-6880

www.donahueassociatesvt.com



**Steve Donahue**

Steve@donahueassociatesvt.com

# FOR LEASE/ RETAIL SPACE

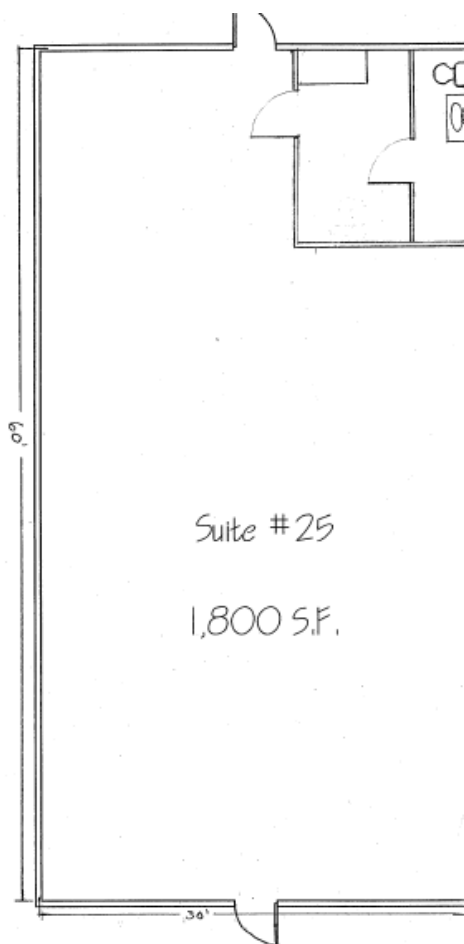
## Taft Corner Shopping Center, Williston, VT

### FLOOR PLANS

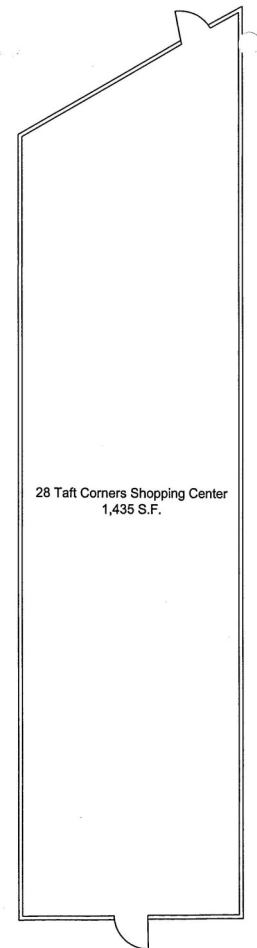
Suite 24



Suite 25



Suite 28



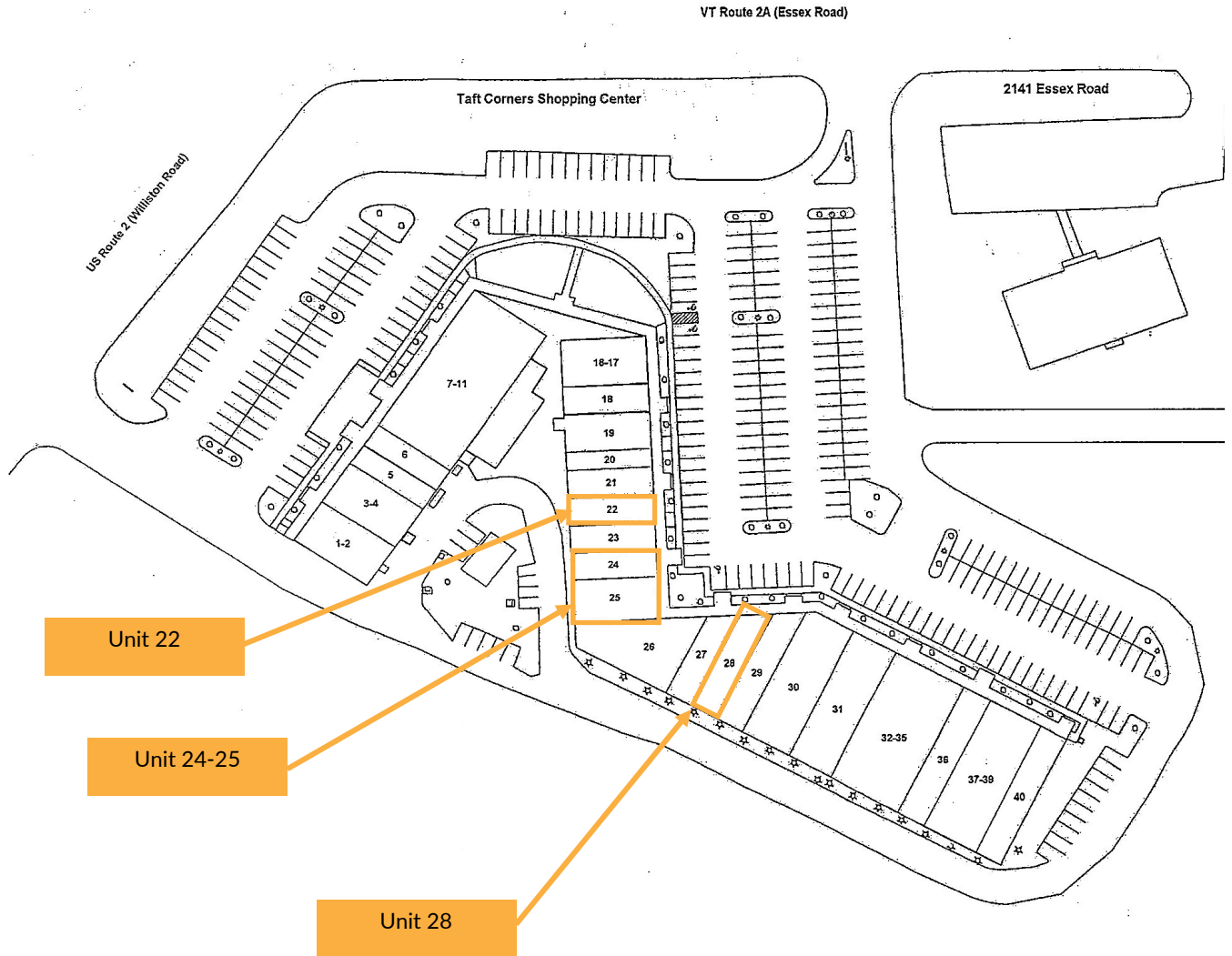


**DONAHUE**  
**ASSOCIATES**  
COMMERCIAL REAL ESTATE ADVISORS

# FOR LEASE/ RETAIL SPACE

## Taft Corners Shopping Center, Williston, VT

### CENTER LAYOUT



*The data contained herein is for informational purposes only and is not represented to be error free. We have made every effort to obtain information regarding listings from sources deemed reliable. However, we cannot warrant the complete accuracy thereof subject to errors, omissions, change of price, rental or other conditions, prior sale, lease or financing, or withdrawal without notice. Notwithstanding, any attachments of scanned and signed documents to the contrary, nothing contained herein constitutes nor is intended to constitute an offer, inducement, promise, or contract of any kind. Only signed documents are adequate to enter into a contract, or to modify, amend, change or provide any required notice to a previously signed contract.*