



DONAHUE
ASSOCIATES
COMMERCIAL REAL ESTATE ADVISORS

802-862-6880

www.donahueassociatesvt.com

**FOR LEASE/
OFFICE SPACE**

Maple Tree Place,
Williston, VT 05452



SUMMARY

Available Suites:

Building C:

Up to 20,000 SF. Smaller Suites Available:
1,280 SF, 5,405 SF, 6,355 SF, or 6,811 SF

Building F:

Suite 12 - 1,058 SF

Suite 15 - 486 SF

Lease Price: \$22.00/SF Gross

Parking: Ample on-site parking

Overview: Offices offer a mix of open layouts, private offices, great natural light and easy access to the shops and amenities that Maple Tree Place has to offer! Enjoy easy access to I-89 and Taft Corners.

Maple Tree Place is favorably positioned in the market and includes an attractive mix of dining, shopping, and entertaining with a state-of-the-art movie complex and family-friendly events. With a strong mix of retailers including the Christmas Tree Shops, Shaw's, Best Buy, Ulta, and Dick's Sporting Goods, Maple Tree Place continues to attract an audience from both local and neighboring areas. Additionally, the center hosts a concert series each summer with live music, dancing, and dinner.

Zoning: Taft Corners Zoning District - Retail, General Office, Medical Office, Family/Child Care, Professional Business Services, Technical and Scientific Services, Arts, Entertainment, and Recreation.

CONTACT US

Donahue & Associates

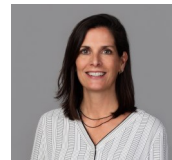
(802) 862-6880

www.donahueassociatesvt.com



Steve Donahue

Steve@donahueassociatesvt.com



Meg McGovern

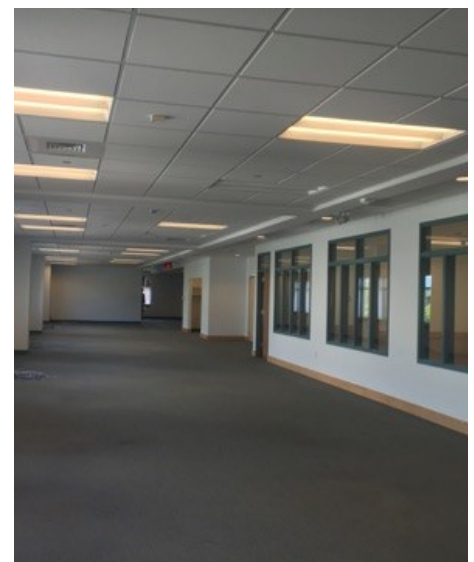
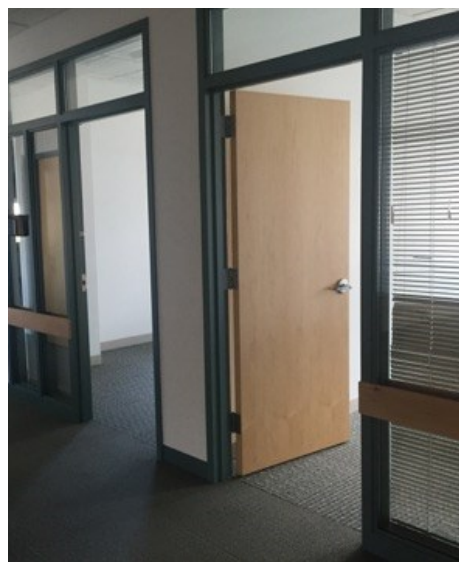
Meg@donahueassociatesvt.com



DONAHUE
ASSOCIATES
COMMERCIAL REAL ESTATE ADVISORS

FOR LEASE/ OFFICE SPACE Maple Tree Place, Williston, VT

PHOTOS



The data contained herein is for informational purposes only and is not represented to be error free. We have made every effort to obtain information regarding listings from sources deemed reliable. However, we cannot warrant the complete accuracy thereof subject to errors, omissions, change of price, rental or other conditions, prior sale, lease or financing, or withdrawal without notice. Notwithstanding, any attachments of scanned and signed documents to the contrary, nothing contained herein constitutes nor is intended to constitute an offer, inducement, promise, or contract of any kind. Only signed documents are adequate to enter into a contract, or to modify, amend, change or provide any required notice to a previously signed contract.

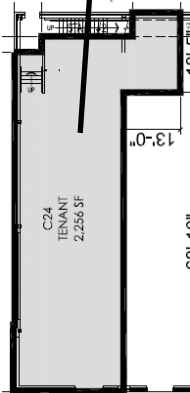
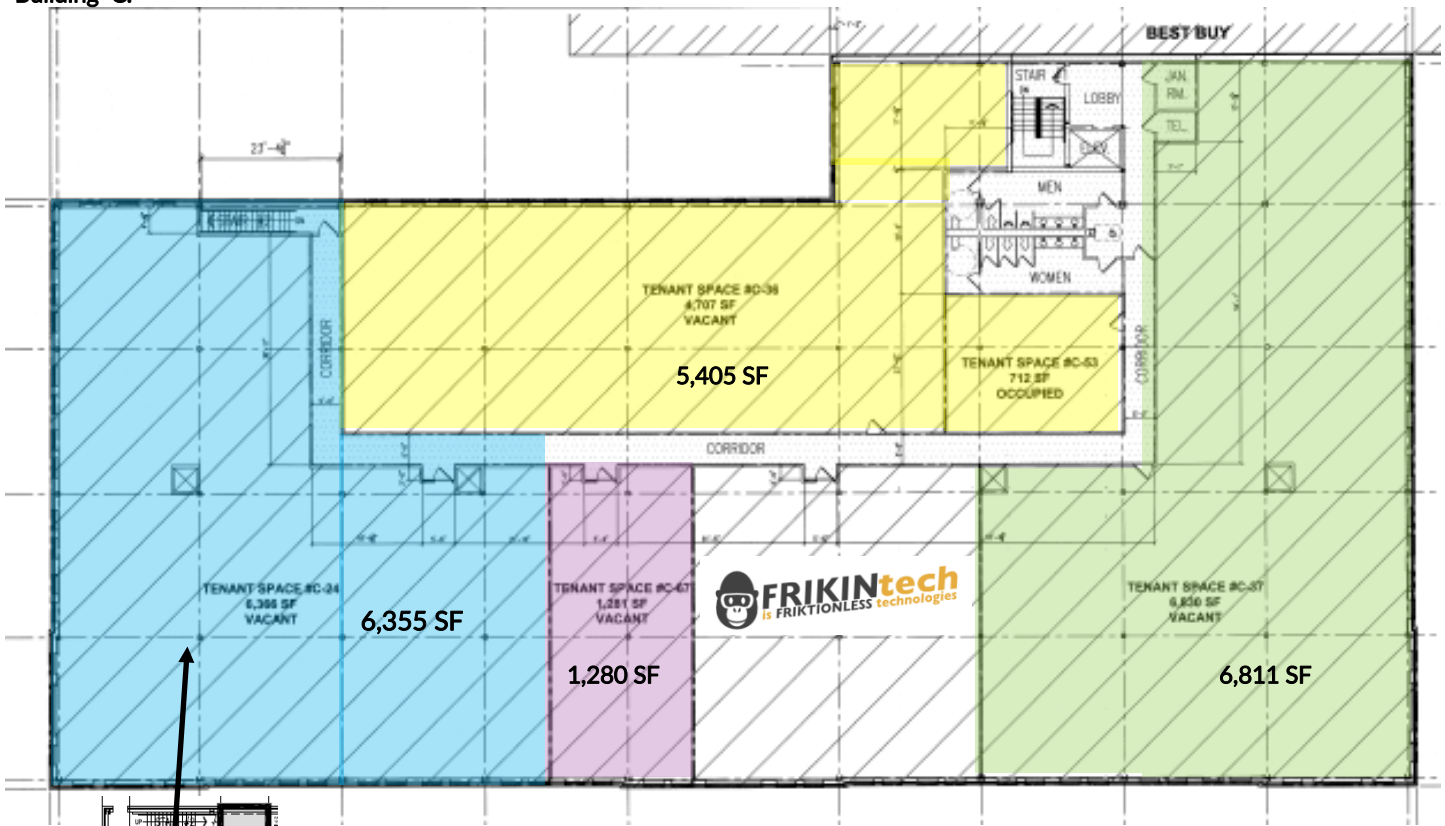


DONAHUE ASSOCIATES
COMMERCIAL REAL ESTATE ADVISORS

FOR LEASE/ OFFICE SPACE Maple Tree Place, Williston, VT

FLOOR PLAN—2nd

Building C:



Below the 6,355 SF Second Floor Space is 2,256 SF retail/office space.

The data contained herein is for informational purposes only and is not represented to be error free. We have made every effort to obtain information regarding listings from sources deemed reliable. However, we cannot warrant the complete accuracy thereof subject to errors, omissions, change of price, rental or other conditions, prior sale, lease or financing, or withdrawal without notice. Notwithstanding, any attachments of scanned and signed documents to the contrary, nothing contained herein constitutes nor is intended to constitute an offer, inducement, promise, or contract of any kind. Only signed documents are adequate to enter into a contract, or to modify, amend, change or provide any required notice to a previously signed contract.



FOR LEASE/ OFFICE SPACE Maple Tree Place, Williston, VT

FLOOR PLAN -2nd

Building F:

- Suite 12 - 1,058 SF
- Suite 15 - 486 SF





FOR LEASE/
OFFICE SPACE
Maple Tree Place, Williston, VT

CURRENT TENANTS



The data contained herein is for informational purposes only and is not represented to be error free. We have made every effort to obtain information regarding listings from sources deemed reliable. However, we cannot warrant the complete accuracy thereof subject to errors, omissions, change of price, rental or other conditions, prior sale, lease or financing, or withdrawal without notice. Notwithstanding, any attachments of scanned and signed documents to the contrary, nothing contained herein constitutes nor is intended to constitute an offer, inducement, promise, or contract of any kind. Only signed documents are adequate to enter into a contract, or to modify, amend, change or provide any required notice to a previously signed contract.