



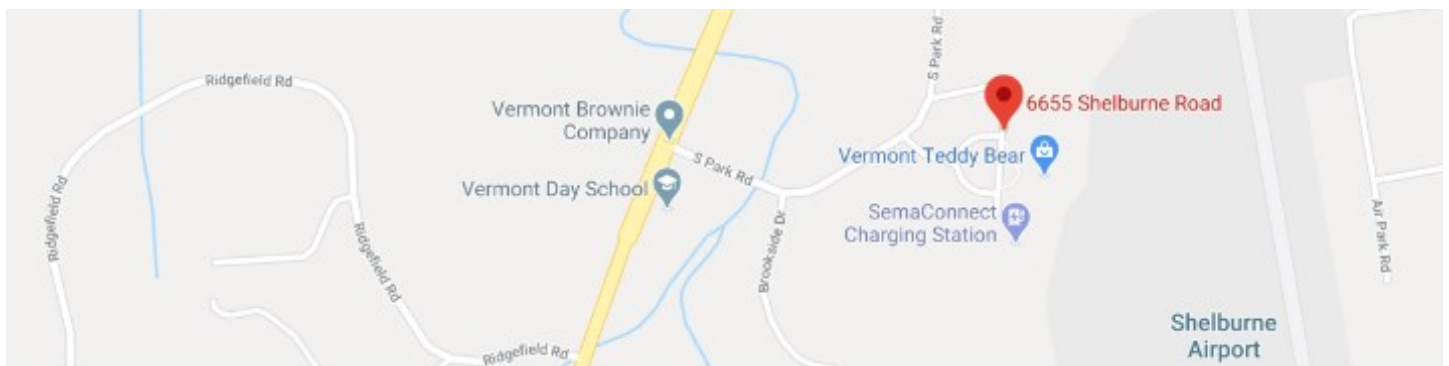
DONAHUE ASSOCIATES
COMMERCIAL REAL ESTATE ADVISORS

802-862-6880

www.donahueassociatesvt.com

**FOR LEASE/
OFFICE & RETAIL**

**6655 Shelburne Road,
Shelburne, VT 05445**



SUMMARY

Available Suites:

Suite 100: 4,800 SF across two floors. Take the entire space or break it up into two 2,400 SF spaces.

Suite 500: 1,350 SF on the second floor with wide open space and two private offices.

Suite 300: 1,772 SF on the second floor with wide open space.

Suite 400: 1,350 SF on the second floor mostly open space with one private office.

Suite 200: 770 SF on the second floor. Wide open space.

Lease Price: \$18.00/SF Gross (includes power, light trash/recycling)

Overview:

Come join the mix of tenants at 6655 Shelburne Road! This building offers a variety of amenities including an on site snack cafe, beautiful outdoor space, views of Camel's Hump and it's dog friendly building. All available spaces offer a mix of open space and private offices, with great natural light, beautiful views and a quiet atmosphere to work. There is ample parking for employees and visitors.

Parking: Ample on-site

CONTACT US

Donahue & Associates

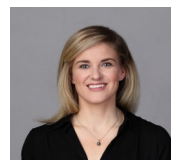
(802) 862-6880

www.donahueassociatesvt.com



Mike Provost

Mike@donahueassociatesvt.com



Kendra Kenney

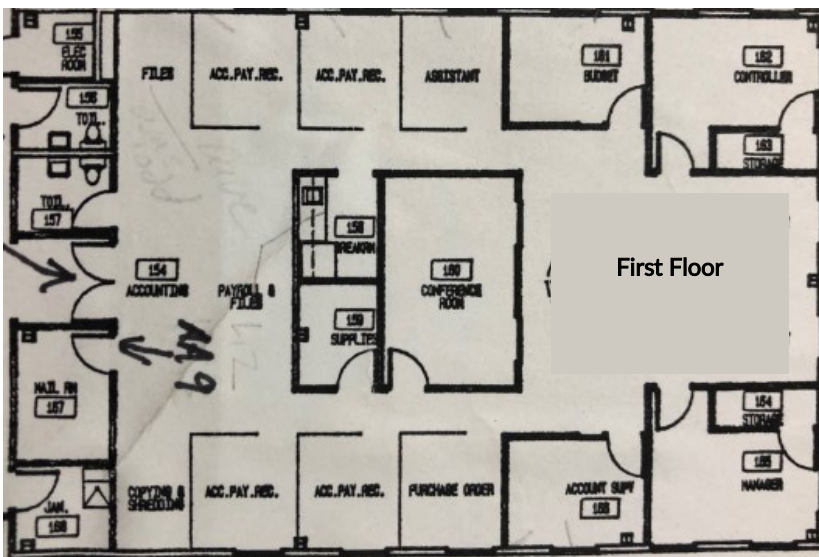
Kkenney@donahueassociatesvt.com



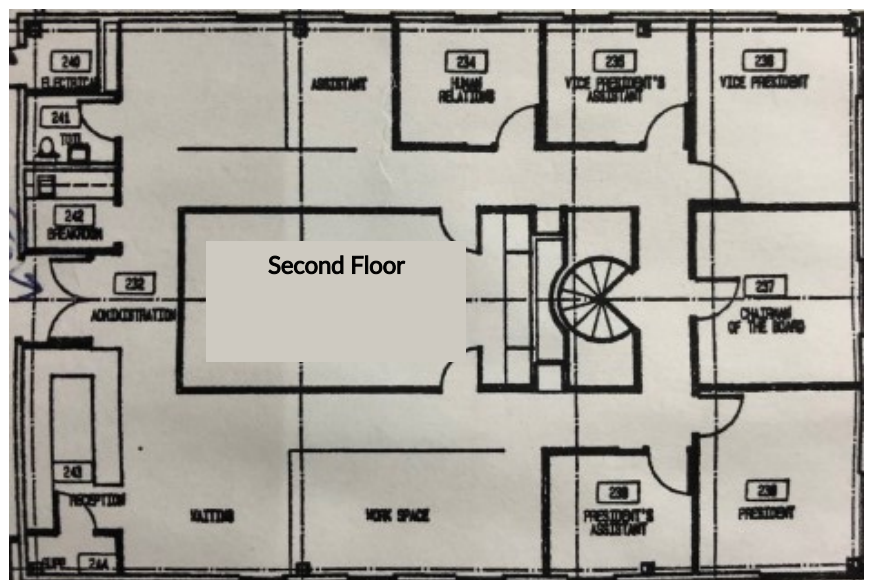
DONAHUE ASSOCIATES
COMMERCIAL REAL ESTATE ADVISORS

FOR LEASE/ OFFICE & RETAIL SPACE 6655 Shelburne Rd, Shelburne, VT

FLOOR PLAN



Suite 100: 4,800 SF across two floors. Take both floors or break the suites up and take 2,400 SF. Both floors offer private offices and open space, excellent natural light with a private kitchenette and bathroom.

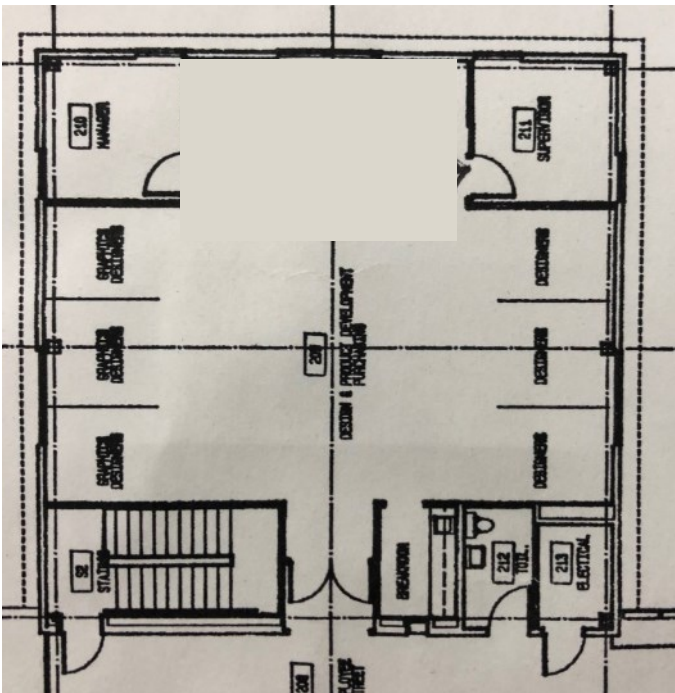


The data contained herein is for informational purposes only and is not represented to be error free. We have made every effort to obtain information regarding listings from sources deemed reliable. However, we cannot warrant the complete accuracy thereof subject to errors, omissions, change of price, rental or other conditions, prior sale, lease or financing, or withdrawal without notice. Notwithstanding, any attachments of scanned and signed documents to the contrary, nothing contained herein constitutes nor is intended to constitute an offer, inducement, promise, or contract of any kind. Only signed documents are adequate to enter into a contract, or to modify, amend, change or provide any required notice to a previously signed contract.



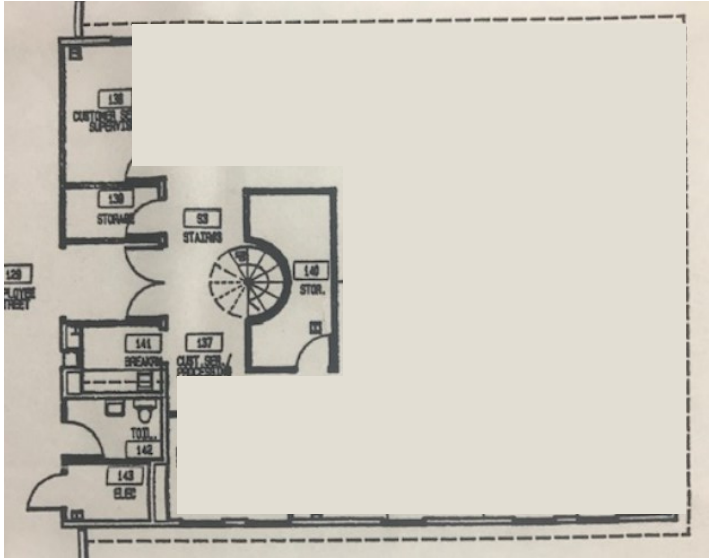
FOR LEASE/ OFFICE & RETAIL SPACE 6655 Shelburne Rd, Shelburne, VT

FLOOR PLAN



Suite 300: 1,772 SF on the second floor. Open space previously used as training room. Great open layout with lots of possibility.

Suite 500: 1,350 SF on the second floor. Large windows offer excellent natural light. Enjoy two private offices and open space. Space also has a private kitchenette.



The data contained herein is for informational purposes only and is not represented to be error free. We have made every effort to obtain information regarding listings from sources deemed reliable. However, we cannot warrant the complete accuracy thereof subject to errors, omissions, change of price, rental or other conditions, prior sale, lease or financing, or withdrawal without notice. Notwithstanding, any attachments of scanned and signed documents to the contrary, nothing contained herein constitutes nor is intended to constitute an offer, inducement, promise, or contract of any kind. Only signed documents are adequate to enter into a contract, or to modify, amend, change or provide any required notice to a previously signed contract.



FOR LEASE/ OFFICE & RETAIL SPACE 6655 Shelburne Rd, Shelburne, VT

PHOTOS



The data contained herein is for informational purposes only and is not represented to be error free. We have made every effort to obtain information regarding listings from sources deemed reliable. However, we cannot warrant the complete accuracy thereof subject to errors, omissions, change of price, rental or other conditions, prior sale, lease or financing, or withdrawal without notice. Notwithstanding, any attachments of scanned and signed documents to the contrary, nothing contained herein constitutes nor is intended to constitute an offer, inducement, promise, or contract of any kind. Only signed documents are adequate to enter into a contract, or to modify, amend, change or provide any required notice to a previously signed contract.