



DONAHUE ASSOCIATES
COMMERCIAL REAL ESTATE ADVISORS

802-862-6880

www.donahueassociatesvt.com

**FOR LEASE/
OFFICE SPACE**

401 Water Tower Circle,
Colchester, VT 05408



SUMMARY

Available Suites:

Suite 2— 1,660 SF

Suite 3— 1,980 SF

Can be combine for a total of 3,640 SF

Overview:

Two beautifully designed and appointed suites located off main lobby with several offices, kitchenette, conference rooms, and more.

Located in The Office Park at Water Tower Hill, 401 greets visitors with a high end lobby with modern finishes, glass door entries, high-speed infrastructure, security system, and more.

Lease Price: \$16.00/SF NNN (est.\$7.53/SF, Utilities \$2.38)

Parking: Ample on-site

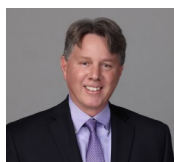
Zoning: COM—Office Building. Approved uses include, but are not limited to, general office, research/lab facility, medical office, personal or business services.

CONTACT US

Donahue & Associates

(802) 862-6880

www.donahueassociatesvt.com



Mike Provost

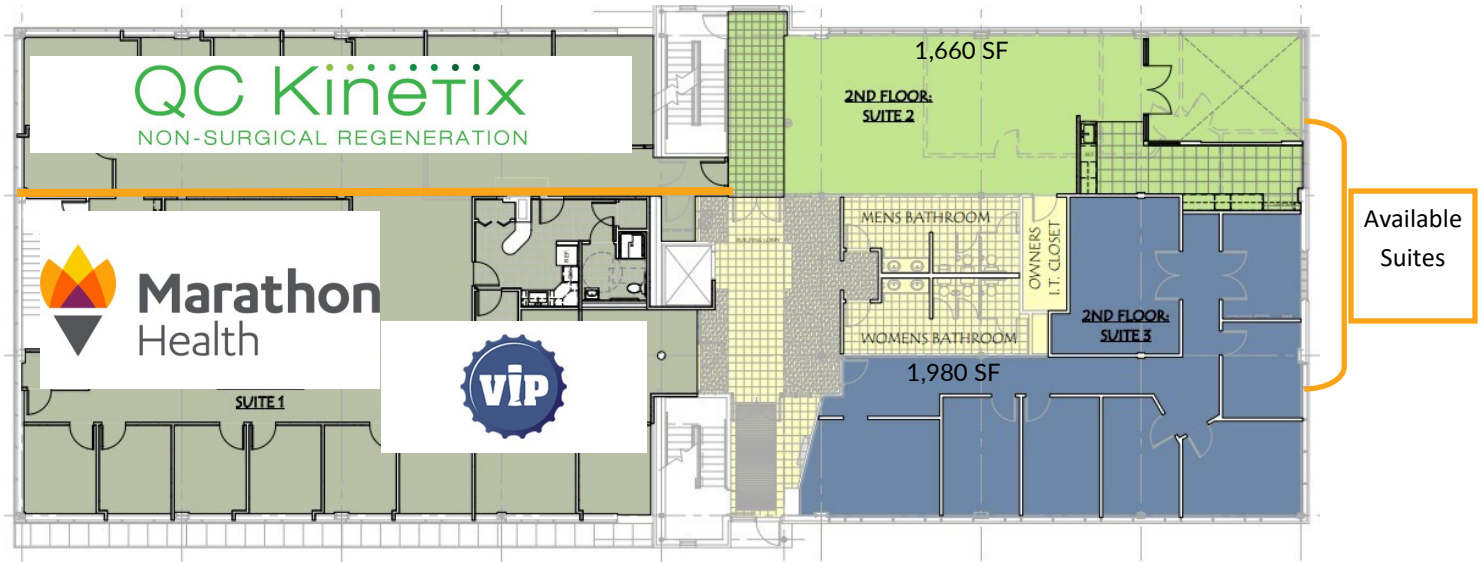
Mike@donahueassociatesvt.com



DONAHUE
ASSOCIATES
 COMMERCIAL REAL ESTATE ADVISORS

**FOR LEASE/
 OFFICE SPACE**
401 Water Tower Circle, Colchester, VT

FLOOR PLAN



2ND Floor Suite USF & RSF Areas

Suite 1: 4,730 USF / 5,222 RSF

Suite 2: 1,503 USF / 1,660 RSF

Suite 3: 1,793 USF / 1,980 RSF

PHOTOS





FOR LEASE/ OFFICE SPACE 401 Water Tower Circle, Colchester, VT

PHOTOS



The data contained herein is for informational purposes only and is not represented to be error free. We have made every effort to obtain information regarding listings from sources deemed reliable. However, we cannot warrant the complete accuracy thereof subject to errors, omissions, change of price, rental or other conditions, prior sale, lease or financing, or withdrawal without notice. Notwithstanding, any attachments of scanned and signed documents to the contrary, nothing contained herein constitutes nor is intended to constitute an offer, inducement, promise, or contract of any kind. Only signed documents are adequate to enter into a contract, or to modify, amend, change or