



DONAHUE
ASSOCIATES
COMMERCIAL REAL ESTATE ADVISORS

802-862-6880

www.donahueassociatesvt.com

**FOR LEASE/
OFFICE SPACE**

401 Water Tower Circle,
Colchester, VT 05408



SUMMARY

Available Suites: 5,222 SF

Lease Price: \$16.00/SF NNN (est.\$7.30/SF, Utilities \$2.24)

Overview:

A beautifully designed and appointed suite located off main lobby with 13 offices, large training multi-purpose room, kitchen, shower, glass conference rooms, and more.

Located in The Office Park at Water Tower Hill, 401 greets visitors with a high end lobby with modern finishes, glass door entries, high-speed infrastructure, security system, and more.

Parking: Ample on-site

Zoning: COM—Office Building. Approved uses include, but are not limited to, general office, research/lab facility, medical office, personal or business services.

CONTACT US

Donahue & Associates

(802) 862-6880

www.donahueassociatesvt.com



Mike Provost

Mike@donahueassociatesvt.com

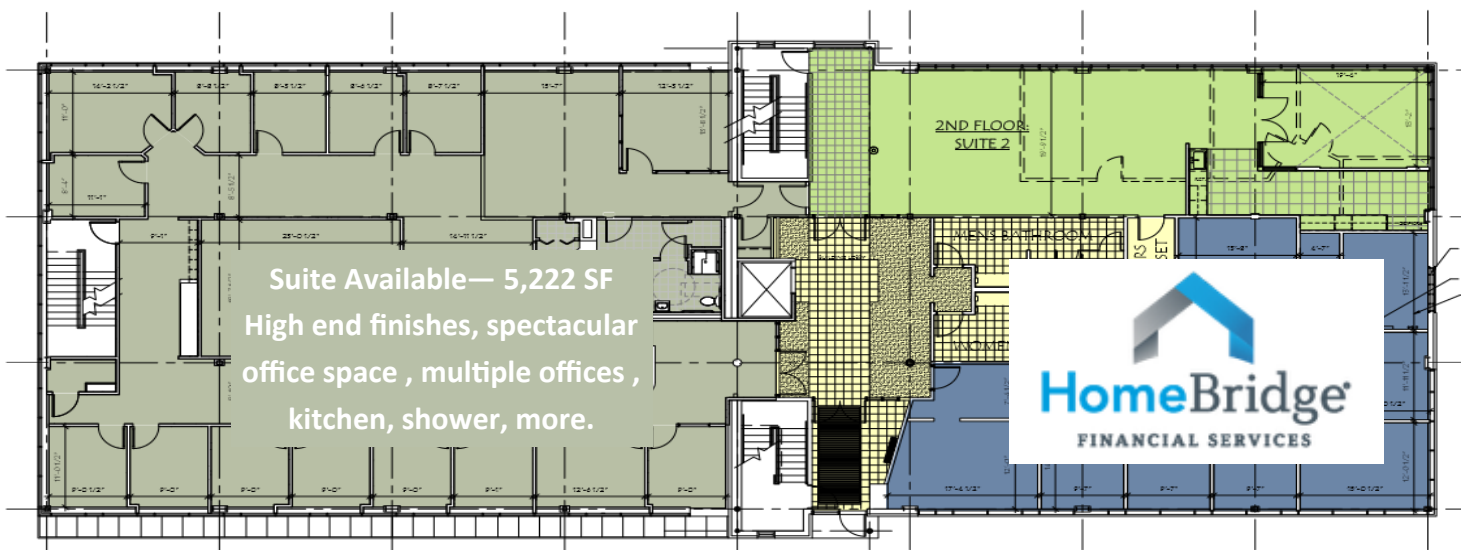


DONAHUE
ASSOCIATES
COMMERCIAL REAL ESTATE ADVISORS

FOR LEASE/ OFFICE SPACE

401 Water Tower Circle, Colchester, VT

FLOOR PLAN



PHOTOS





FOR LEASE/ OFFICE SPACE 401 Water Tower Circle, Colchester, VT

PHOTOS



The data contained herein is for informational purposes only and is not represented to be error free. We have made every effort to obtain information regarding listings from sources deemed reliable. However, we cannot warrant the complete accuracy thereof subject to errors, omissions, change of price, rental or other conditions, prior sale, lease or financing, or withdrawal without notice. Notwithstanding, any attachments of scanned and signed documents to the contrary, nothing contained herein constitutes nor is intended to constitute an offer, inducement, promise, or contract of any kind. Only signed documents are adequate to enter into a contract, or to modify, amend, change or provide any required notice to a previously signed contract.